

TEKNISK INFO

TECHNICAL INFO

10. maj 2023 4.22 PM



BELLA CENTER stue plan

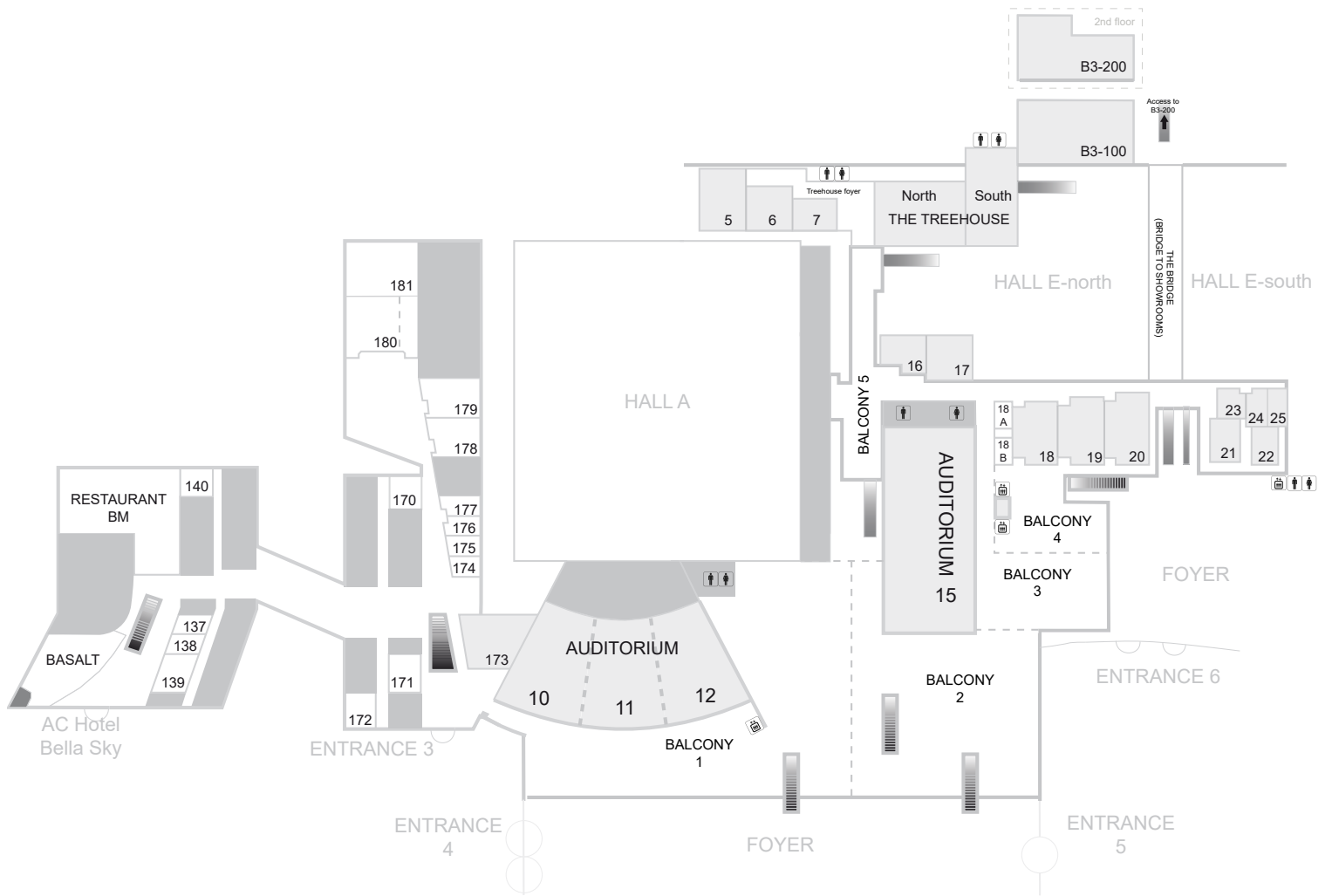
Bella Center Ground plan

METRO



BELLA CENTER 1. sal

Bella Center 1st Floor



Indholdsfortegnelse

På de følgende sider finder du nyttige informationer om vores udstillingshaller. Reglerne er lavet for at sikre, at alle udstillere kan få optimale forhold under et arrangement, hvorfor vi beder dig læse dem grundigt. Har du yderligere spørgsmål, er du velkommen til at kontakte Bella Center.

Bella Center oversigt
Indholdsfortegnelse
Hal A
Hal B
Hal C
Hal D
Hal E
Foyer (F0-F7)
Balcony (1-5)
Outdoor area - Entrance 3-6

Content

On the following pages, you will find detailed information on our exhibition halls. The rules have been made to help ensure optimum conditions for all exhibitors during an event. Please read them carefully. If you have additional questions, please contact Bella Center.

<i>Bella Center overview</i>	2
<i>Content</i>	4
<i>Hall A</i>	5
<i>Hall B</i>	8
<i>Hall C</i>	11
<i>Hall D</i>	15
<i>Hall E</i>	20
<i>Foyer (F0-F7)</i>	23
<i>Balcony (1-5)</i>	28
<i>Outdoor area Entrance 3-6</i>	34

Kongressal A

– en kort beskrivelse

Congress Hall A – a brief description

Adgang til hallen

På tegningen kan du se numrene for de enkelte porte, der giver adgang til hallen.

Accessing the hall

Please refer to the floorplan where access points are indicated.

Hallens frihøjde

Hallens frihøjde er variabel op til 8,90m målt fra underkanten af loftets lys sætning.

Ceiling height

Ceiling heights vary up to 8.90m, measured from the under edge of the ceiling flood lighting.

Belysning

I hallens loftflåde hænger der lysarmatur med 3x14W lavenergi lysrør til hallens generelle belysning. Lysstyrken kan dæmpes. Halogenbelysning, lavet som stjernehimel, kan tændes i 3 niveauer: 33%, 66% og 100%

General lighting

The hall is equipped with 3x14W fluorescent low-energy light fittings for general lighting. The brightness can be regulated. Halogen lighting, made as starry sky, can be turned into 3 levels: 33%, 66% and 100%.

Loft/Ophængning i loft

Installation af el, vvs, netværk og trykluft trækkes fra loftet.

Ceiling/ suspension in the ceiling

Power, plumbing, network as well as compressed air will be supplied from the ceiling.

Wirer: De fleste steder i hallen kan der monteres wirer med en vægt fra 0-99 kg. Wirer med en vægt over 99 kg kræver speciel godkendelse. Kontakt venligst din koordinator i Bella Center for beregninger samt godkendelse
Bella Center forbeholder sig ret til evt. at tilpasse placering.

Drop wires: Most places in the hall we can mount drop wires with a weight up to 99 kg. Drop wires exceeding 99 kg will require a special approval. Please contact your coordinator at Bella Center for calculations and approval.
Bella Center reserves the right to to customize location.

Taljepunkter og rigning: Der kan rigges i spær. Der arbejdes med variable vægt, ift. loftets totalbelastning. Detailtegningen indeholder information om spær eller riggepunkternes placering.
Hvis I har behov for ophæng i en position mellem to riggepunkter, kan det opnås med enten bridling eller ved at hænge et rig-stykke.
Per riggepunkt kan der som udgangspunkt maksimalt hænges 500 kg.
Har I brug for rigning, at bridle eller opsætte rig-stykke, bedes I kontakte jeres kontaktperson for muligheder, validering og tilbud.

Hoist and rigging: It is possible to use the truss for rigging. We are working with variable weight, depending on other loads in the ceiling.

The detail drawings for stands will include information on the location of the beams or rigging points.
If you need suspension in a position between two rigging points, this can be achieved by either bridling or by hanging a rig-piece. In general a maximum of 500 kg can be hung per rigging point.

If you need rigging, bridling or to hang a rig-piece, please contact your contact at Bella Center for options, validation and offers.

Bella Center forbeholder sig ret til evt. at tilpasse placering.

Bella Center reserves the right to to customize location.

Gulv

Gulvet er dækket af mørkeblåt gulvtæppe med mønster. Gulvet kan klare følgende belastninger:
Punktbelastning fordelt på 15x15cm = 4000 kg.

Floor

The floor is covered with dark blue carpet with pattern. The floor can carry the following loads:
Single-point load per 15x15cm = 4,000 kg.

Kørsel i områderne med udendørskøretøjer kræver speciel godkendelse.

Outdoor vehicles in the area will require a special approval.

Vægge

Dækket af stofgardin fra loft til gulv.

Brandskab, L75xW25xH85cm – må ikke tildækkes.

Walls

Covered by fabric curtain from ceiling to floor.

Fire hose reel cabinets, L75xW25xH85cm – must not be concealed.

Luft

Hallen har luftkonditioneret ventilation.

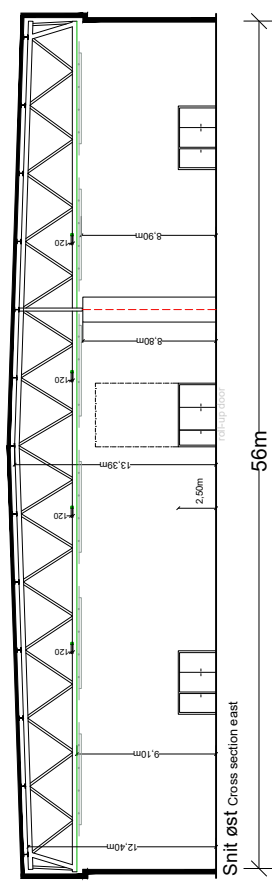
Air

The hall has air conditioned ventilation.

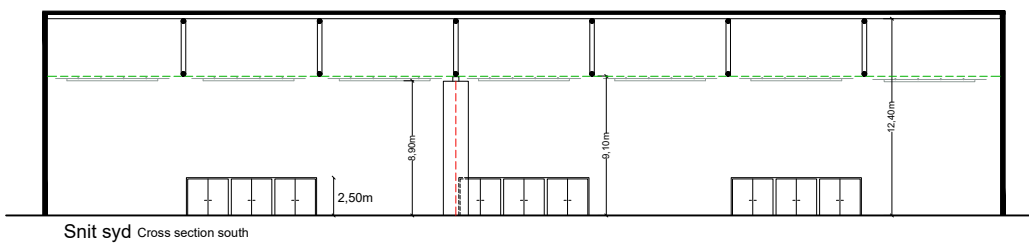
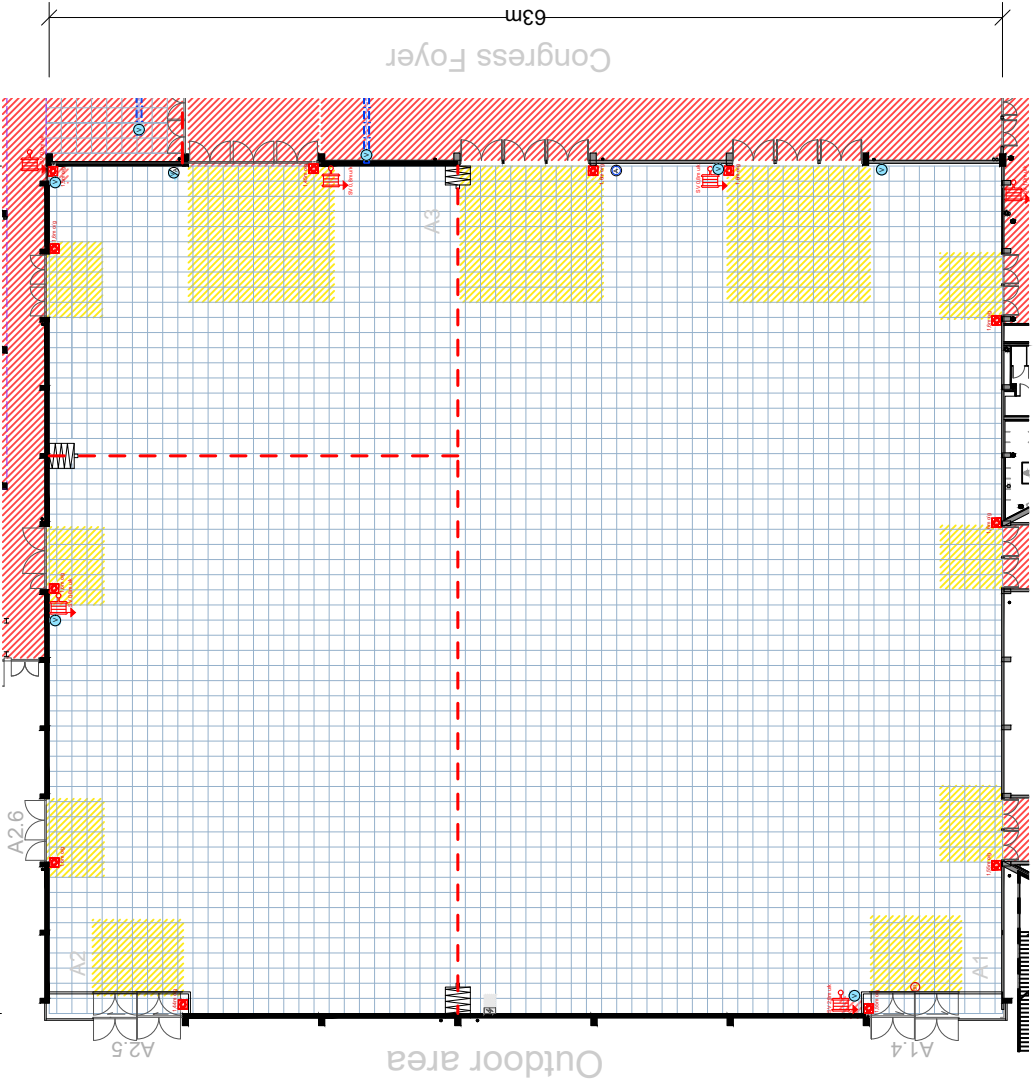
HAL A

Hall A

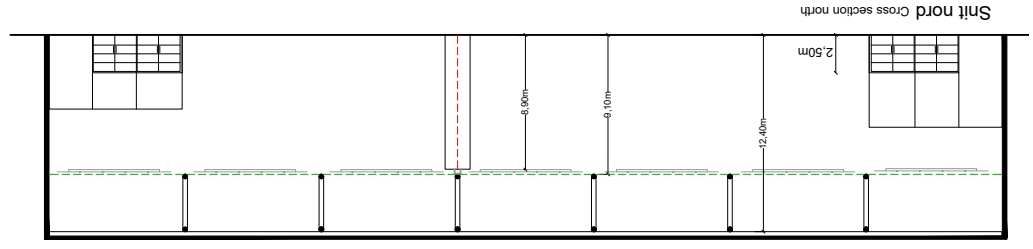
SCALE 1:500 - FORMAT A4



Snit øst Cross section east



Snit syd Cross section south



Snit nord Cross section north

DETAILS Gulv/Floor

- 1x1m GRID
- BRANDTRYK Fire-alarm
- SLANGEVINDER Fire-hose reel
- FOLDEVÆG Movable Wall
- VAND Water
- AFLØB Drainage
- VAND & AFLØB Water & Drainage

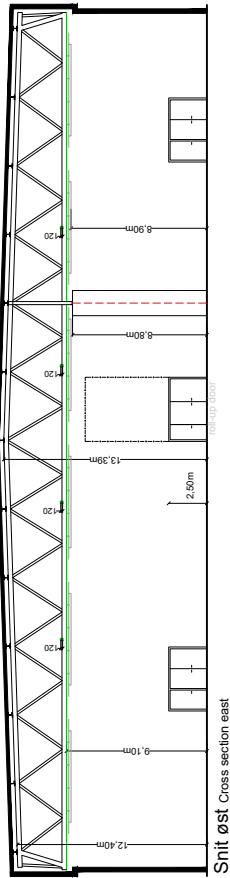
Auditorium Foyer

- Brand Restriktions Zone:**
 - Gul- Begrenset indretning
 - Orange- Serlige betingelser og restriktioner
 - Rød- Opbygning forbudt
- Fire Restriktions Zone:**
 - Yellow- Limited usage
 - Orange- Special conditions and restrictions
 - Red- All Build up prohibited

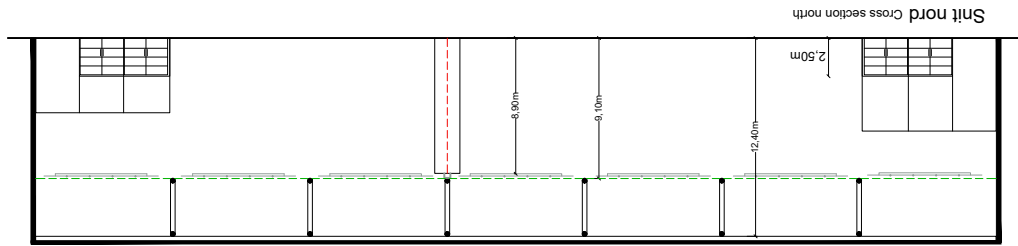
HAL A

Hall A

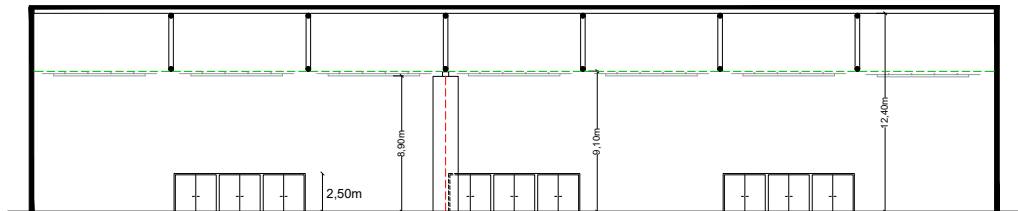
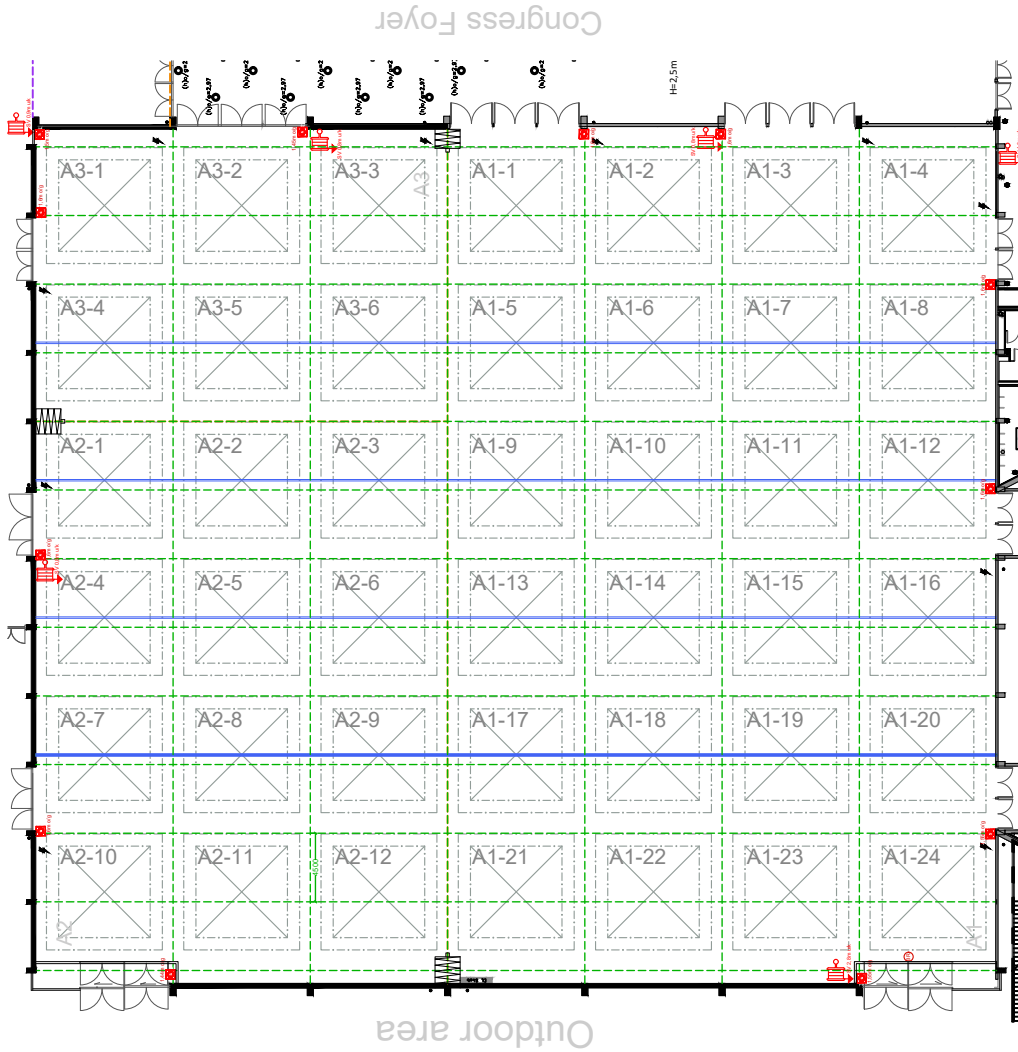
SCALE 1:500 - FORMAT A4



Snit øst Cross section east



Snit nord Cross section north



Snit syd Cross section south

DETAILS Loft/Ceiling

BRANDTRYK
Fire-alarm

SLANGEVINDER
Fire-hose reel

SPÆR TIL RIGGING
Roof beam for rigging

SPÆR - IKKE TIL OVERBELASTNING
Roof Non load beam

FOLDEVÆG
Movable Wall



LOFTFLÅDE, 3x3m
Ceiling fleet 3x3m

Hal B

– en kort beskrivelse

Adgang til hallen

På tegningen kan du se numrene for de enkelte døre, der giver adgang til hallen. Større gods skal leveres via port B5-8.

Hallens frihøjder

Frihøjderne i hal B er: 3m / 3,35m.
Se haltegningen på side 9-10.

Belysning

I hal B0 hænger der lysskinner med 70 Watt metalhalogen spots. Lyset er fastmonteret og må kun justeres af Bella Center personale.

I hal B1-B2 hænger der lysskinner med 30 Watt LED spots.

I hal B3-B5 er der monteret lysskinner med 11 Watt LED. 6 stk pr. 9m². Desuden er der et lysarmatur med 3x14 Watt pr. 9m².

I hal B6 er der monteret 70 Watt halogenlampe 6 stk pr. 9m².

Desuden er der et lysarmatur med 3x14 Watt pr. 9m².

Loft/Ophæng i loft

Installation af el, VVS og netværk mv. sker fra loftet.

I hal B0-B2 skal al rigning ske fra de fastmonterede øskner i loftet. Den maksimale belastning af øsknerne er 49kg pr. punkt. Detailtegningen indeholder information om riggepunkternes placering.

I hal B3-B6 er der ophængt et kabelbakkesystem, opdelt i 3x3m moduler. Kabelbakkesystemet er delt i 2 højder på henholdsvis 3,0m og 3,35m over gulv. Den maksimale belastning af kabelbakkeloftet er på 25 kg/m². Vægskinnesystemet er ophængt 320cm over gulv. Max kg for wire;

B0, B1 og B2 49 kg

B3-B5 99 kg

Gulv

I hal B0-B2 er gulvet et flydespartlet gulv.

I hal B3-B6 er gulvet lys gråmalet beton.

Gulvet kan klare følgende belastninger:

Hjultryk (tvillingehjul)	5.500 kg/m ²
Punktbelastning fordelt på 15x15cm	4.000
Max belastning (lastbil inkl. læs)	4.000 kg/m ²

Søjler

I hal B0 er søjlerne midt i hallen runde med en diameter af 55cm og ved ydervægge er søjler 45x45cm.

I hal B1-B6 er betonsøjlerne 50x50cm, mens de ved ydervæggene er 25x50cm.

Brandskabe og slangevinder – må ikke tildækkes.

Luft

Hal B har aircondition.

Hall B – a brief description

Accessing the hall

On the floor plan you will find the numbers of each gate entrance to the hall. Larger goods must be delivered through gate B5-8.

Ceiling heights

Hall B has two ceiling heights: 3m / 3.35m.

Please see the floor plan on page 9-10.

Lighting

Hall B0 is equipped with spot rails containing 70 Watt metal halogen spots. The light is fixed and may only be adjusted by Bella Center staff.

Hall B1-B2 is equipped with spot rails containing 30 Watt LED spots.

Hall B3-B5 is equipped with spot rails containing 11 Watt LED spots. 6 pcs pr 9 m² and a 3x14 Watt low energy fluorescent light fitting per 3x3m grid module.

Hall B6 is equipped with spot rails containing 70 Watt halogen spots. 6 pcs pr 9m² and a 3x14 Watt low energy fluorescent light fitting per 3x3m grid module.

Ceiling/suspension in the ceiling

Power, plumbing, network etc. will be supplied from the ceiling.

In hall B0-B2 all rigging must be made from the existing eyebolts in the ceiling. The maximum load on each eyebolt is 49 kg.

The detail drawings for stands will include information on the location of the rigging points.

Hall B3-B6 is fitted with a modular cable tray grid, each module measuring 3x3m. The grid is mounted in two heights: 3,0m and 3,35m as specified above.

Max load for wires;

B0, B1 & B2 49 kg

B3-B5 99 kg

Floor

In hall B0-B2 the floor is a mottled design floor.

In hall B3-B6 the floor is painted concrete in a light grey colour.

The floor can carry the following loads:

Axle loads (twin wheels)	5,500 kg per sq.m.
Single point loads per 15x15cm	4,000 kg
Max load (load incl. weight of truck)	4,000 kg per sq.m.

Pillars

In hall B0 the center pillars have a diameter of 55cm and against outer walls the pillars measure 45x45cm.

In hall B1-B6 the concrete pillars measure 50x50cm, whilst they measure 25x50cm along outer walls.

Fire hose reel – must not be concealed.

Air

Hall B has air conditioning.

Hall B

SCALE 1:1000 - FORMAT A4



DETAILS Gulv/Floor

1x1m GRID
 BRANDTRYK Fire-alarm

SLANGEVINDER Fire-hose reel

SØJLE 50x50CM
 Pillar 50x50cm

SØJLE Ø55CM
 Pillar Ø55cm

HALLENS FRIHØJDE
 Ceiling heights

- Brand Restriktions Zone:**
 - Gul- Begrænset indtrængning
 - Orange- Særlige betingelser og restriktioner
 - Rød- Opbygning forbudt
- Fire Restriktions Zone:**
 - Gul- Limited usage
 - Orange- Special conditions and restrictions
 - Rød- All Build up prohibited

Hal C

– en kort beskrivelse

Adgang til hallen

På tegningen kan du se numrene for de enkelte porte, der giver adgang til hallen.

Hallens frihøjder

Hver af hallens fire sektioner har sin egen frihøjde, målt fra gulv til underkant lamper:

C1: 4,30m, C2: 5,85m, C3: 6,85m, C4: 6,85m. Se side 12-14.

Belysning

Hallen er udstyret med permanente rigkonstruktioner med 150W Powerball Spots, farve 5000 kelvin, som skal tilkøbes jævnfør tilbud.

Til den generelle belysning hænger der (3x58 W) lysarmaturer.

Loft/Ophængning i loft

Netværk trækkes fra loftet.

Wirer: Grundlæggende kan der ophænges 1 wire pr. 3 meter med en maks. belastning på 99 kg.

Det er muligt at lave andre vægtberegninger / -fordelinger. Detailtegningen indeholder information om spær eller riggepunkt-ternes placering.

Kontakt venligst din koordinator i Bella Center for beregninger samt godkendelse

Bella Center forbeholder sig ret til evt. at tilpasse placering.

Taljepunkter og rigning:

Der kan rigges i spær. Der arbejdes med variable vægt, ift. loftets totalbelastning.

Hvis man har behov for ophæng i en position mellem to riggepunkter, kan det opnås med enten bridling eller ved at hænge et rig-stykke. Per riggepunkt kan der som udgangspunkt maksimalt hænges 200kg.

Se Rig info på side 14.

Har du brug for rigning, at bridle eller opsætte rig-stykke, bedes du kontakte din koordinator i Bella Center for muligheder, validering og tilbud.

Bella Center forbeholder sig ret til evt. at tilpasse placering.

Gulv

Gulvet er gråmalet beton (farvekode Ral 7038). Installation af el, netværk, VVS og trykluft sker via kanaler i hallens betongulv. Kanalernes indbyrdes afstand er 6 m.

Gulvet kan klare følgende belastninger:

Hjultryk (tvillingehjul)	5.500 kg/m ²
Punktbelastning fordelt på 15x15cm	4.000 kg
Max belastning (lastbil inkl. læs)	4.000 kg/m ²

Søjler

De fritstående søjler i hallen er 40x80cm og placeret for hver 9 meter. Søjlerne i ydervæggene er 35x40cm.

Brandskab og slangevinder – må ikke tildækkes.

Luft

Hal C har aircondition.

Hall C – a brief description

Accessing the hall

Please refer to the floorplan where access points are indicated.

Ceiling heights

Each of the four sections in hall C has its own ceiling height, measured from the floor to the lower edge of the lighting truss:

C1: 4.30m, C2: 5.85m, C3: 6.85m, C4: 6.85m.

Please see page 12-14.

General lighting

The hall is equipped with permanent lighting truss with 150W Powerball Spots, color 5000 kelvin. The solution is offered according to quote.

General hall light fittings (3x58 W)

Ceiling/suspension in the ceiling

Network cables will be supplied from the ceiling.

Drop wires: Most places in the hall we can mount drop wires with a weight up to 99 kg. Drop wires exceeding 50kg will require a special approval.

The detail drawings for stands will include information on the location of the beams or rigging points.

Please contact your coordinator at Bella Center for calculations and approval.

Bella Center reserves the right to adjust placement.

Hoist and rigging:

It is possible to use the truss for rigging. We are working with variable weight, depending on other loads in the ceiling..

If you need suspension in a position between two rigging points, this can be achieved by either bridling or by hanging a rig-piece.

In general a maximum of 200 kg can be hung per rigging point. Please see Rig Info on page 14.

If you need rigging, bridling or to hang a rig-piece, please contact your coordinator at Bella Center for options, validation and offers.

Bella Center reserves the right to adjust placement.

Floor

The floor is concrete, painted light grey (color code Ral 7038). Power, plumbing, network and compressed air will, if possible, be supplied via the subfloor services ducts which are build-in the floor at 6 m intervals.

The floor can carry the following loads:

Wheel loads (twin wheels)	5,500 kg per sq.m.
Single point loads per 15x15cm	4,000 kg
Max loads (load incl. weight of truck)	4,000 kg per sq.m

Pillars

40x80cm freestanding concrete pillars line the arcade sections running east/west at intervals of 9m.

Pillars let into the outer walls measure 35x40cm wide.

Fire hose reel – must not be concealed.

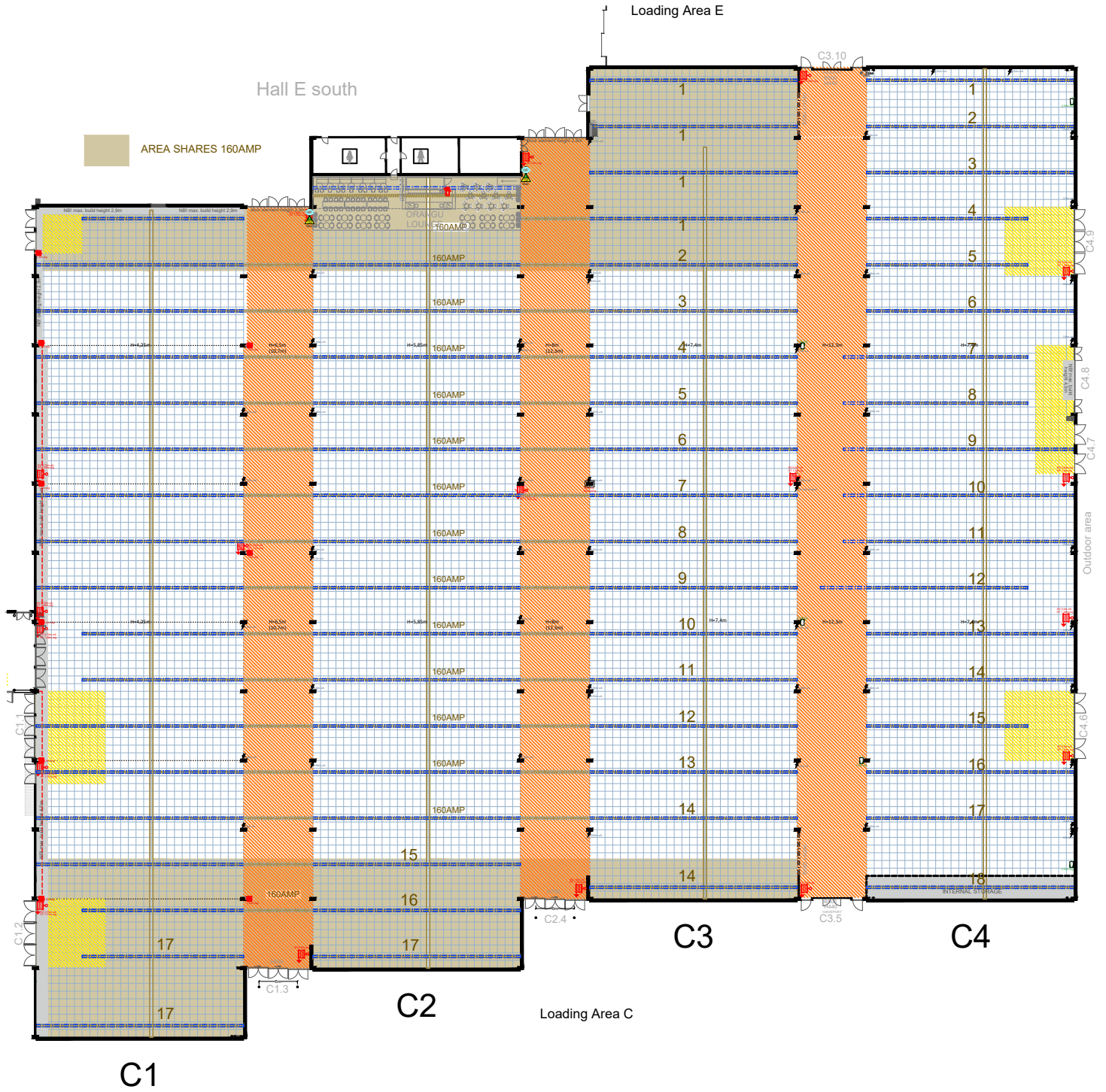
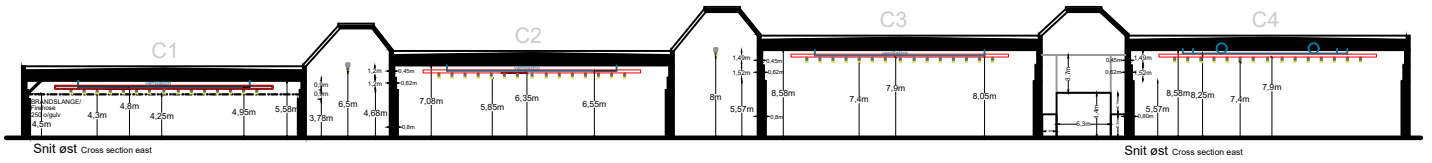
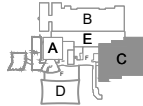
Air

Hall C has air conditioning.

BELLA ·
CENTER
COPEN
HAGEN

HAL C Hall C

SCALE 1:750 - FORMAT A4

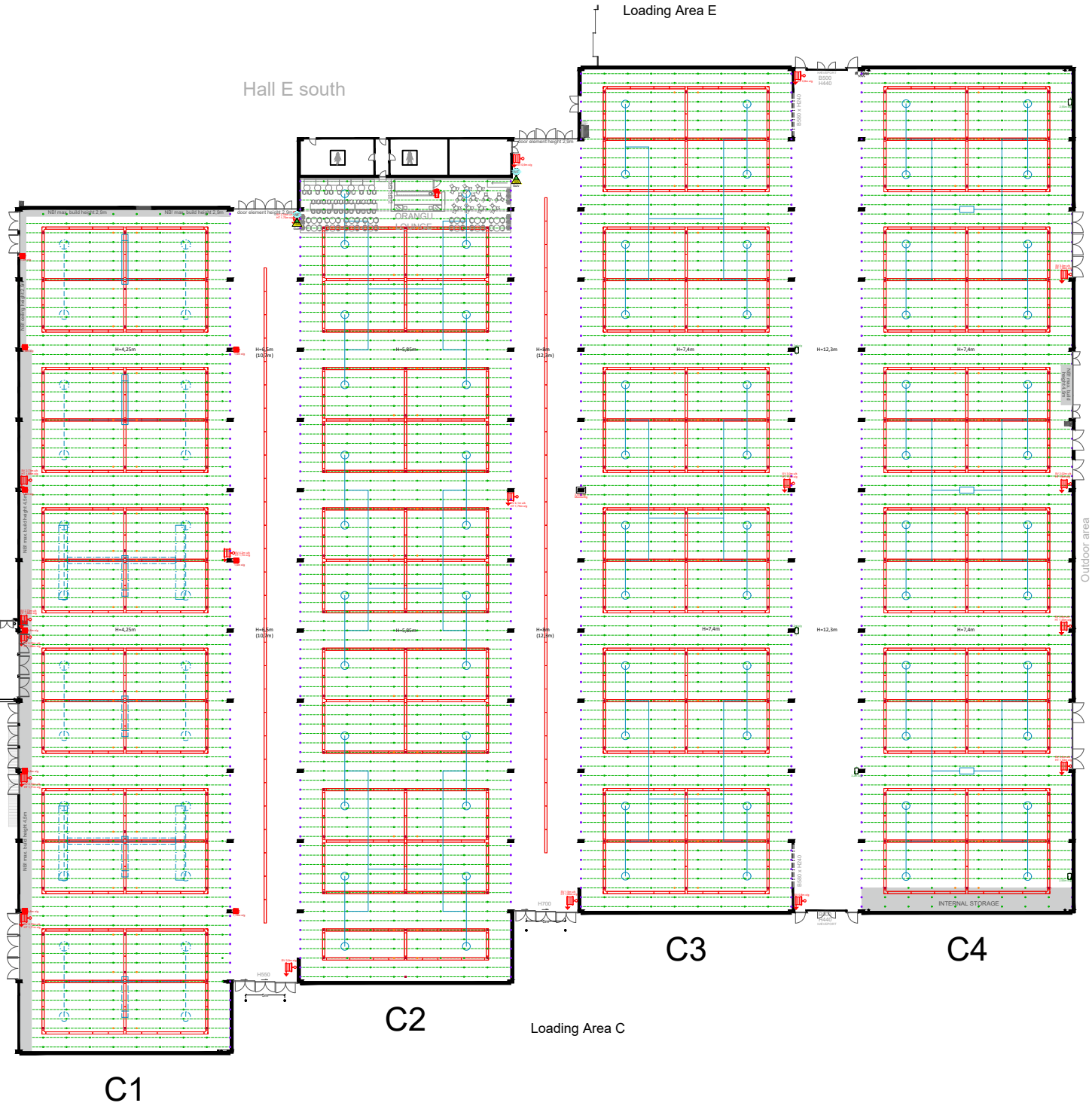
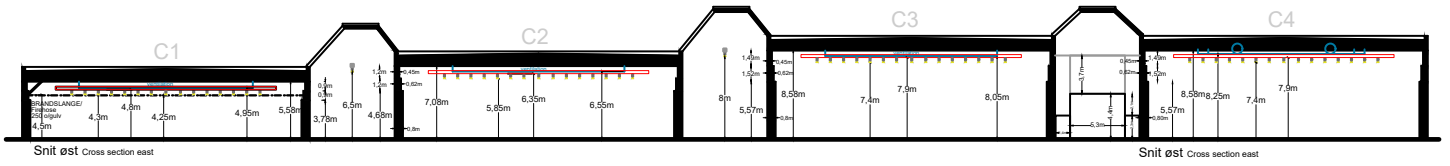
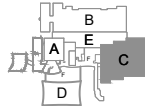


DETAILS Gulv/Floor







- | | | | | |
|---------------------------------|--------------------------------|---------------------------|---|---|
| 1x1m GRID | BRANDTRYK
Fire-alarm | ELSKAB
Power cabinet | Brand Restriksjons Zone:
-Gul-
Begrænset indretning
-Orange-
Særlige betingelser og restriksjoner
-Rød-
Opbygning forbudt | Fire Restrictions Zone:
-Yellow-
Limited usage
-Orange-
Special conditions and restrictions
-Red-
All Build up prohibited |
| SØJLE 40x80CM
Pillar 40x80cm | SLANGEVINDER
Fire-hose reel | KABELGRAV
Cable duct | | |
| | | STRØMSKINNE
Power rail | | |

HAL C Hall C

SCALE 1:750 - FORMAT A4

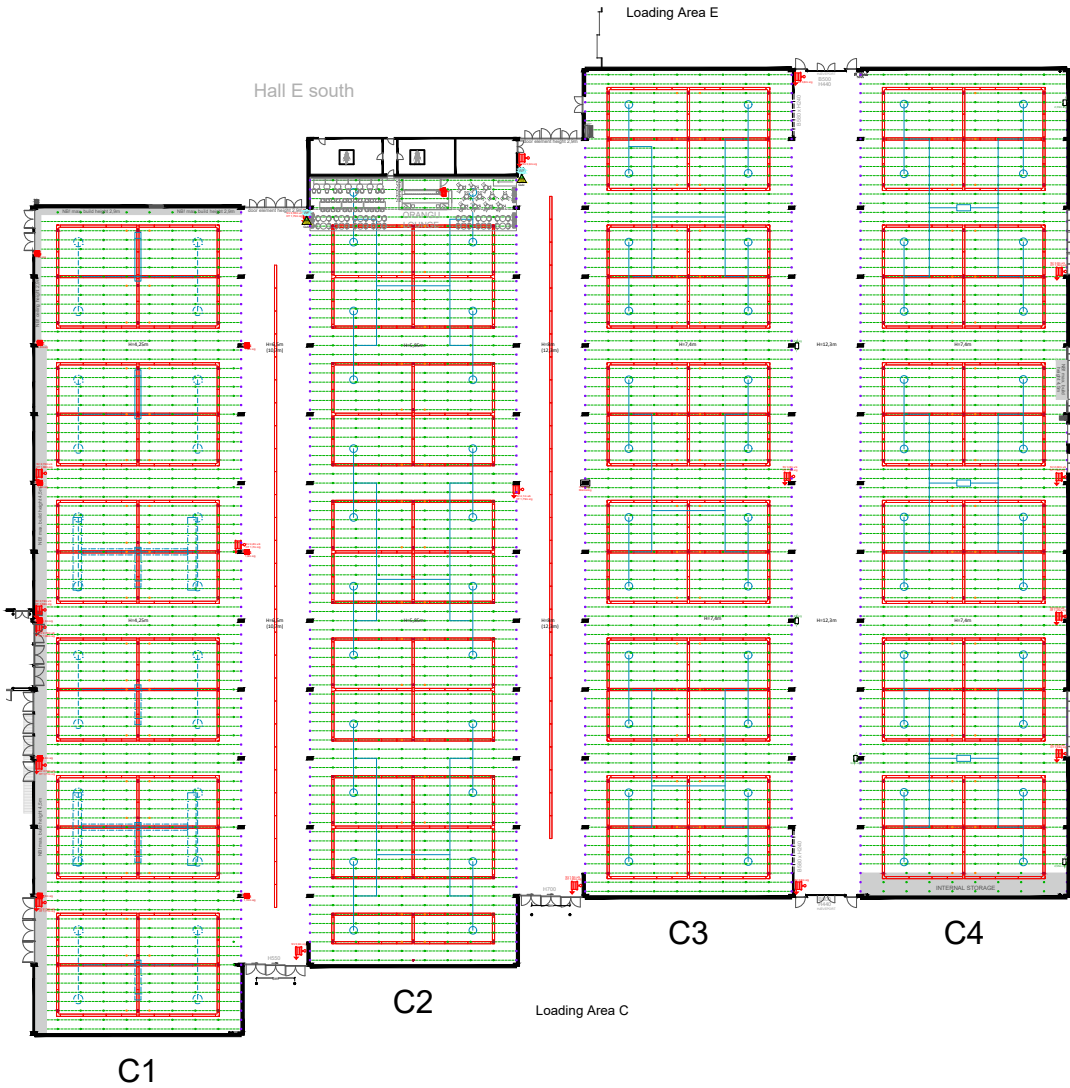
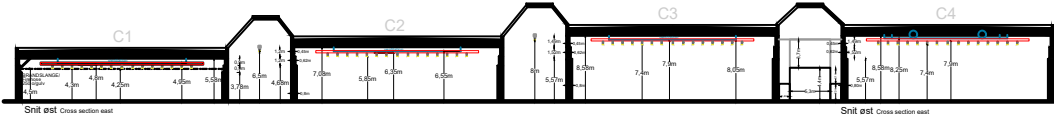
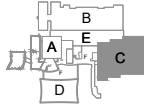


DETAILS Loft/Ceiling

-  BRANDTRYK
Fire-alarm
-  LYS RIG M/SPOTS
Lighting truss with spots
-  SØJLE 40x80CM
Pillar 40x80cm
-  SLANGEVINDER
Fire-hose reel
-  VENTILATION
Ventilation
-  RIGGEPUNKTER I LOFT
Rigging points in ceiling

HAL C Hall C

SCALE 1:750 - FORMAT A4



RIGGING INFORMATION

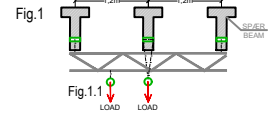
RIGGING INFO

NOTE (DK):

Rigging - sikkerheden i højsædet

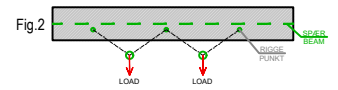
På tegningen over C-hallen kan man se alle brugbare riggehuller

De er markeret med symbolet , og man kan altid rigge direkte i dem med en vægt på op til 200 kg (Fig.1).



Hvis man har behov for ophæng i en position mellem to riggepunkter, kan det opnås med enten bridling (hvis riggehullerne er i samme spær - se Fig 2) eller ved at underhænge et rigestykke mellem to eller flere spær (Fig. 1.1). Bridling er tilladt mellem riggepunkter i samme spær (Fig 2) Bridling er ikke tilladt mellem riggehuller på tilstødende spær. Der kan rigges mellem spær ved at hænge et rigestykke nedenunder. (Fig. 1.1)

Hvis der er behov for et rigestykke, så kontakt din koordinator i Bella Center for et tilbud. Koordinatoren kan også vejlede generelt omkring mulighederne.



Rigge huller (afstand imellem spær 120cm)

Grøn - 200kg

Lilla - 200kg

Orange - 50kg

Rød - Kan ikke belastes yderligere - riggehuller benyttes til den permanente rig.

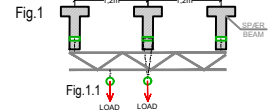
Laster er totalaster inkl. talje beslag, rig mv.

Øvrige punkter kan belastes med 200kg pr. punkt.

NOTE (UK):

Rigging - safety first

The drawing of the C-hall shows all accessible rigging points indicated with the symbol . All of these rigging points separately for rigging up to 200kg (Fig.1).

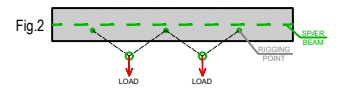


If you have a need for rigging between two rigging points, this can be solved by using bridling (if the points are in the same beam - Fig 2) or by adding a truss underneath two beams or more (Fig. 1.1).

Bridling is allowed between rigging points on the same beam. (Fig 2)

Bridling is not allowed between rigging points placed on adjacent beams. Specific rigging positions can still be achieved by hanging a truss underneath. (Fig. 1)

Please contact your coordinator at Bella Center for further inquiries and quotes.



Rigging Points (Distance between beams 120cm)

Green - 200kg

Purple - 200kg

Orange - 50kg

Red - In use for permanent truss - no extra load allowed

Load is a total of chains, blocks, truss etc.

All other rigging points can be used for 200kg

DETAILS Loft/Ceiling

- BRANDTRYK
Fire-alarm
- LYS RIG M/SPOTS
Lighting truss with spots
- SØJLE 40x80CM
Pillar 40x80cm
- SLANGEVINDER
Fire-hose reel
- VENTILATION
Ventilation
- RIGGEPUNKTER I LOFT
Rigging points in ceiling

Hal D

– en kort beskrivelse

Adgang til hal D

På tegningen kan du se adgangen til hal D.

Hallens frihøjde

Underkant skørt: 11,7 meter

Underkant spær: 12,5 meter

Såfremt man har et specifikt krav til en lofthøjde i et givent område bedes dette afklares med koordinator.

Belysning

Hallen er udstyret med en grundbelysning, der kan zone inddeles og dæmpes (1-100%).

Lyskilde: Pendelarmatur Lumitech LUFO IV: LED 20.000 Lumen out. 3.000 Kelvin, CRI 80-89. MacAdam SDCM 3. Dali dimmable (1-100%). Flicker free.
Blænding under 25. Minimum 300 lux på gulv.

Hallen er inddelt i 38 zoner tilsluttet DMX House Control.

Loft/Ophængning i loft

Brandventilationsvinduerne i loftet er uden lysindfald.

Wirer: Der kan ophænges wire med en maks. belastning på 99 kg, dog afhængigt af øvrig ophængning i loftet.
Detailtegningen indeholder information om spær eller riggepunkternes placering.

Venligst kontakt din koordinator i Bella Center for godkendelse. Bella Center forbeholder sig ret til evt. at tilpasse placering.

Taljepunkter og rigning:

Per 1m kan der belastes enten 100kg-60kg eller 50kg se tegning på side 18.

Per 3m kan der maksimalt belastes med 300kg

Der kan ikke rigges i skinner til foldevæg !

Hvis man har behov for ophæng i en position mellem to riggepunkter, kan det opnås med bridling.

Har du brug for rigning, bedes du kontakte din Bella center koordinator for muligheder, validering og tilbud.

Bella Center forbeholder sig ret til evt. at tilpasse placering.

Gulv

Gulvet er et flisebelagt betongulv. Flisen er en lys betonflise. Gulvet er udformet med en række forsyningskanaler, som ligeledes er dækket af aftageligt dæksel.

Gulvet kan klare følgende belastninger:

15x15 cm jævnt fordelt trykflade = 2500 kg

30x30 cm jævnt fordelt trykflade = 4000 kg

Hallen har gulvkanaler til fremførsel af vand, internet og VVS. Kanalernes indbyrdes afstand (c-c) er 9 m. Kanalerne er 60 cm brede. Kanaldæksel: 60x120cm. Disse kan klare overkørsel fra 9t akseltryk fra lastbiler. Lastbiler og/eller trucks må dog ikke parkere med hjulene lige på lågene.
Længerevarende enkeltlaste over 1000 kg fordelt på 30x30cm skal undgås.

Hall D– a brief description (1 of 2)

Accessing Hall D

Please refer to the floor plan where access points are indicated.

Ceiling height

Lower edge of skirt: 11,7 meter

Lower edge of truss: 12,5 meter

If you have a specific requirement for a ceiling height in a given area, please clarify this with your coordinator.

General lighting

The hall is equipped with a basic lighting which can be zoned and dimmed (1-100%).

Light source: Pendant luminaire Lumitech LUFO IV: LED 20,000 Lumen out. 3,000 Kelvin, CRI 80-89. MacAdam SDCM 3. Dali dimmable (1-100%). Flicker free.

Glare below 25. Minimum 300 lux on floor. The hall is divided into 38 zones connected to DMX House Control.

Ceiling/suspension in the ceiling

The fire ventilation windows in the ceiling are without inflow of lights.

Drop wires: We can mount drop wires with a weight up to 99 kg., however, depending on other loads in the ceiling.

The detail drawings for stands will include information on the location of the beams or rigging points.

Please contact your coordinator at Bella Center for approval. Bella Center reserves the right to adjust placement.

Hoist and rigging:

Per 1m the maximum load is 100kg-60kg or 50kg see drawing at page 18.

Per 3m the maximum load is 300kg

No rigging allowed in rails for folding walls !

If you need suspension in a position between two rigging points, this can be achieved by bridling.

If you need rigging, please contact your Bella Center coordinator for options, validation and offers.

Bella Center reserves the right to adjust placement.

Floor

The floor is a tiled concrete floor. The tile is a light concrete tile. The floor is designed with a number of supply ducts, which are covered by a removable cover.

The floor can withstand the following loads:

15x15 cm evenly distributed printing surface = 2500 kg

30x30 cm evenly distributed printing surface = 4000 kg

The hall has floor channels for water supply, internet and plumbing. The distance between the channels (c-c) is 9 m. The channels are 60 cm wide. Duct cover: 60x120cm. These can handle overtaking from 9000kg axle load from trucks. However trucks is not allowed to park with the wheels directly on the duct covers. Longer-lasting single loads over 1000 kg distributed over 30x30cm must be avoided.

Hal D

– fortsat

Mobilvægge

Hallen er udstyret med mobilvægge til opdeling af hallen i op til 5 rum. Et væg modul er 123cm i bredden. Mobilvæggene kan parkeres i 4 tilhørende magasiner der er afdækket med væggar-diner. Service døre mål h260cm b180cm. Væggene må kun betjenes af Bella Center personale og mens hallen er uden gæster.

Dæmpning: 53dB
Overflade og farve: Malet grå (RAL 7037) stålplade.

Vinduer og mørklægning

I hallens nord-, syd- og vestvendte facader er der vinduer, som kan mørklægges efter behov (manuelt med kontakt på væg ved vinduesparti).

Vægge

Brandskab og slangevinder – må ikke tildækkes.

Væggene er beklædt med henholdsvis vægtæpper (Kvadrat Dawn 2, farve 792, mørke blå) og akustikpaneler i 3 dybder og med skærende fuger. Panelerne fremstår med perforerede, galvaniserede stålplader opsat med 3 forskellige afstandsdybder til væg.

Port og døre

Det er muligt at benytte hallens porte til tung trafik (9 tons akseltryk).

Gavl port, D1, (bxh): 5,0 x 4,5 m
Gavl port, D2, (bxh): 3,5 x 3,5 m
Gavl port, D3, (bxh): 3,5 x 3,5 m
Gavl port, D4, (bxh): 5,0 x 4,5 m
Gavl port, D5, (bxh): 3,5 x 3,5 m

3 af dørene i hallens vestlige facade (mod logistikzonen) kan anvendes til kørsel med truck.

Luft

Hal D har aircondition

Strøm

Hallen har en samlet strømkapacitet på 2.000A. Af disse kan der udtages 4 stk 400A via PowerLock i hallens sydlige væg. Til udstillinger m.m. er det muligt at fremføre strøm via hallens gulvkanaler, som går på tværs af hallens længderetning. De er placeret med 9 meters mellemrum og er som standard forsynet med 200A per kanal.

Lyd og støjgrænser

Af hensyn til gæster og naboer, må der maksimalt afspilles musik med et støjniveau på 96dB(A). Vores naboer må således kun opleve 40dB(A) i en halv time målt ved udvendig husfacade i tidsrummet kl. 22:00-07:00. For øvrige tidsrum – se <https://mst.dk/luft-stoej/stoej/stoejgraenser/graensevaerdier-virk-somheder/>.

Hall D– a brief description (1 of 2)

Mobile Walls

The hall is equipped with mobile walls for dividing the hall up to 5 individual rooms. A wall module is 123cm in width. The mobile walls can be parked in 4 related magazines covered with wall curtains. Service doors measurement h260cm w180cm) The walls may only be operated by Bella Center staff and while the hall is without guests.

Attenuation: 53 dB
Surface and color: Painted gray (RAL 7037) steel plate.

Windows and blackout

In the north, south and west facing facades of the hall, there are windows that can be darkened if needed.

Walls

Fire cabinet and hose reel – must not be concealed.

The walls are covered with curtains (square Dawn 2, the color 792, dark blue) and acoustic panels, respectively, in 3 depths and with intersecting joints. The panels appear with perforated galvanized steel sheets, set up in 3 different wall depths.

Gate and doors

It is possible to use the hall gates for heavy traffic (9 tons axle load).

End gate, D1, (wxh): 5.0 x 4.5 m
End gate, D2, (wxh): 3.5 x 3.5 m
End gate, D3, (wxh): 3.5 x 3.5 m
End gate, D4, (wxh): 5.0 x 4.5 m
End gate, D5, (wxh): 3.5 x 3.5 m

3 of the doors in the west facade (at the logistic zone) can be used for truck driving

Air

Hall D has air conditioning.

Electric power

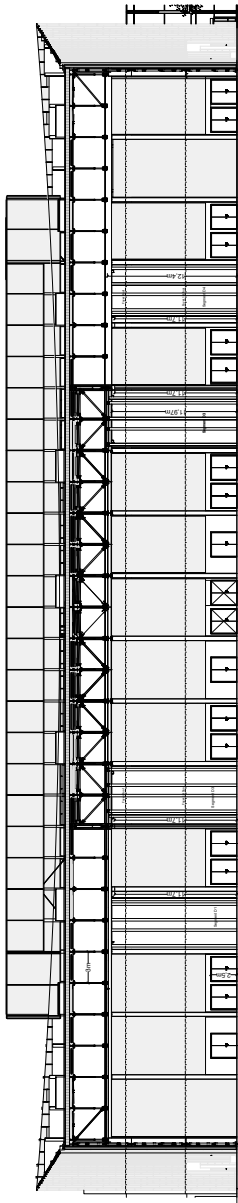
The hall has a total electric power capacity of 2.000A. From these, can 4x 400A be taken out through PowerLock in the south wall of the hall. For exhibitions etc. it is possible to carry electric power in subfloor service ducts, across the longitudinal direction of the hall. They are located at 9 meter intervals and are equipped with 200A per duct as standard.

Sound and noise limits

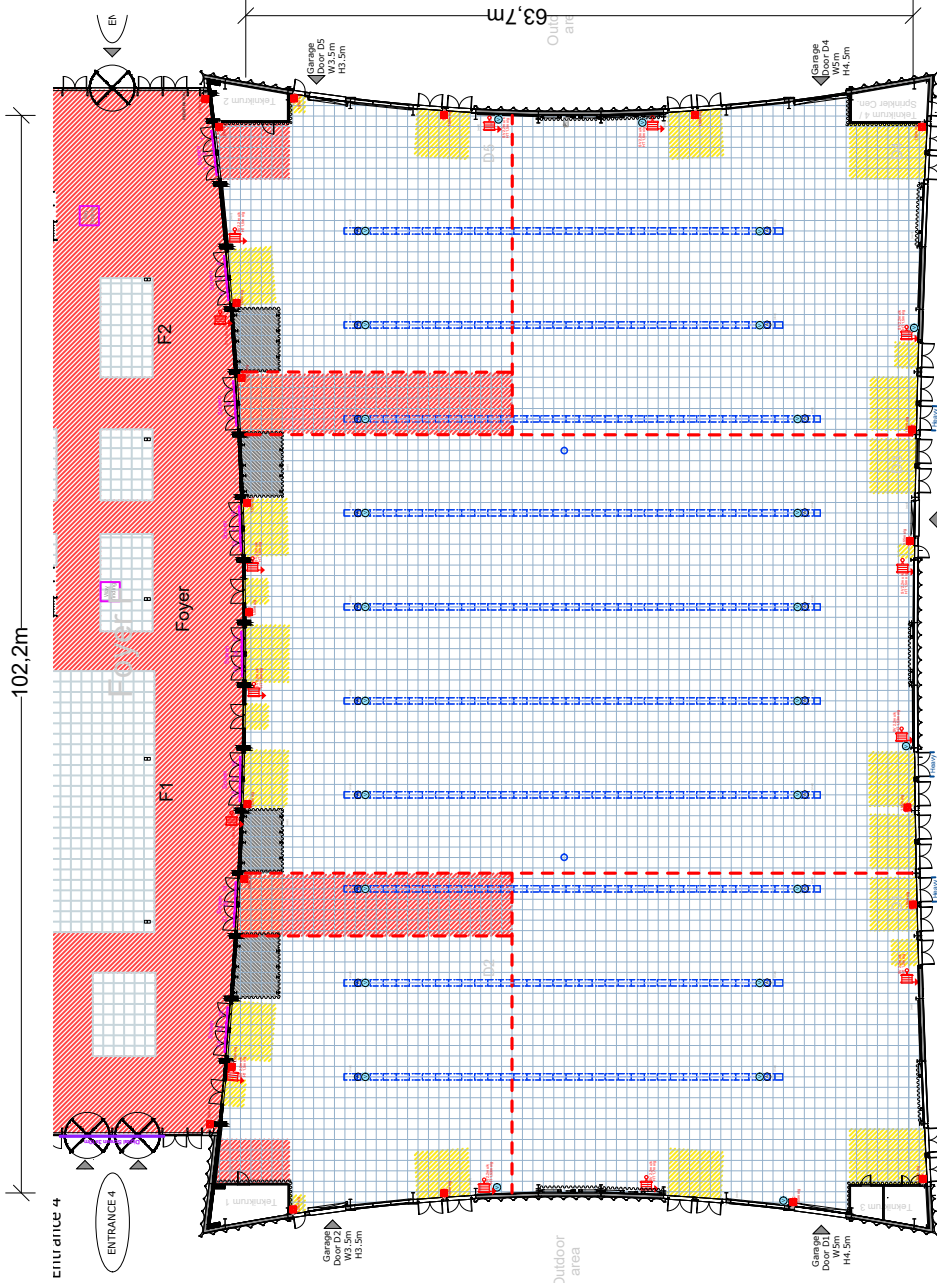
In the interest of guests and neighbors, music with a maximum noise level of 96dB (A) may be played. Our neighbors may thus only experience 40dB (A) for half an hour, measured at the exterior house facade, in the period between 22: 00-07: 00. For other time periods - see <https://mst.dk/luft-stoej/stoej/stoejgraenser/graensevaerdier-virk-somheder/>.

HAL D Hall D

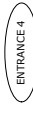
SCALE 1:750 - FORMAT A4



Snit øst Cross section east

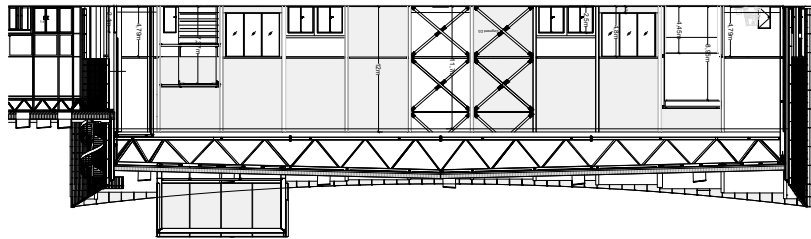


ENTRANCE 4



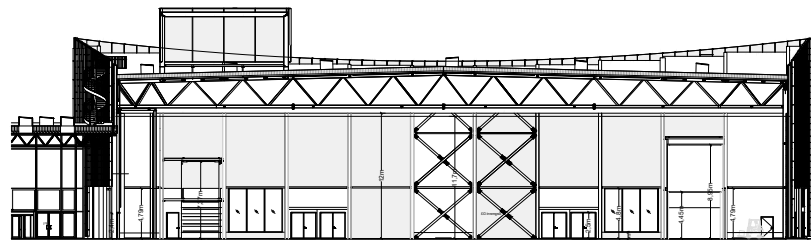
Outdoor area

Loading Area D



Snit nord Cross section north

Snit syd Cross section south



DETAILS Gulv/Floor

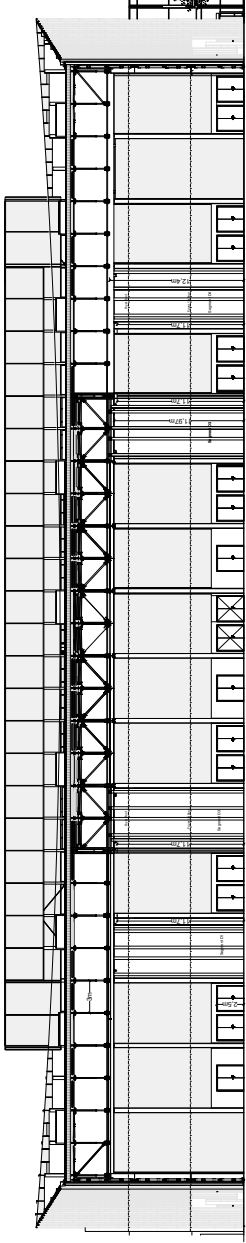
- 1x1m GRID
- BRANDTRYK Fire-alarm

- SLANGEVINDER Fire-hose reel
- FOLDEVÆG (like multigat/lippe here) Movable Wall (rigging is not possible here!)
- KABELGRAV Cable duct
- VAND Water
- AFLØB Drainage
- VAND & AFLØB Water & Drainage

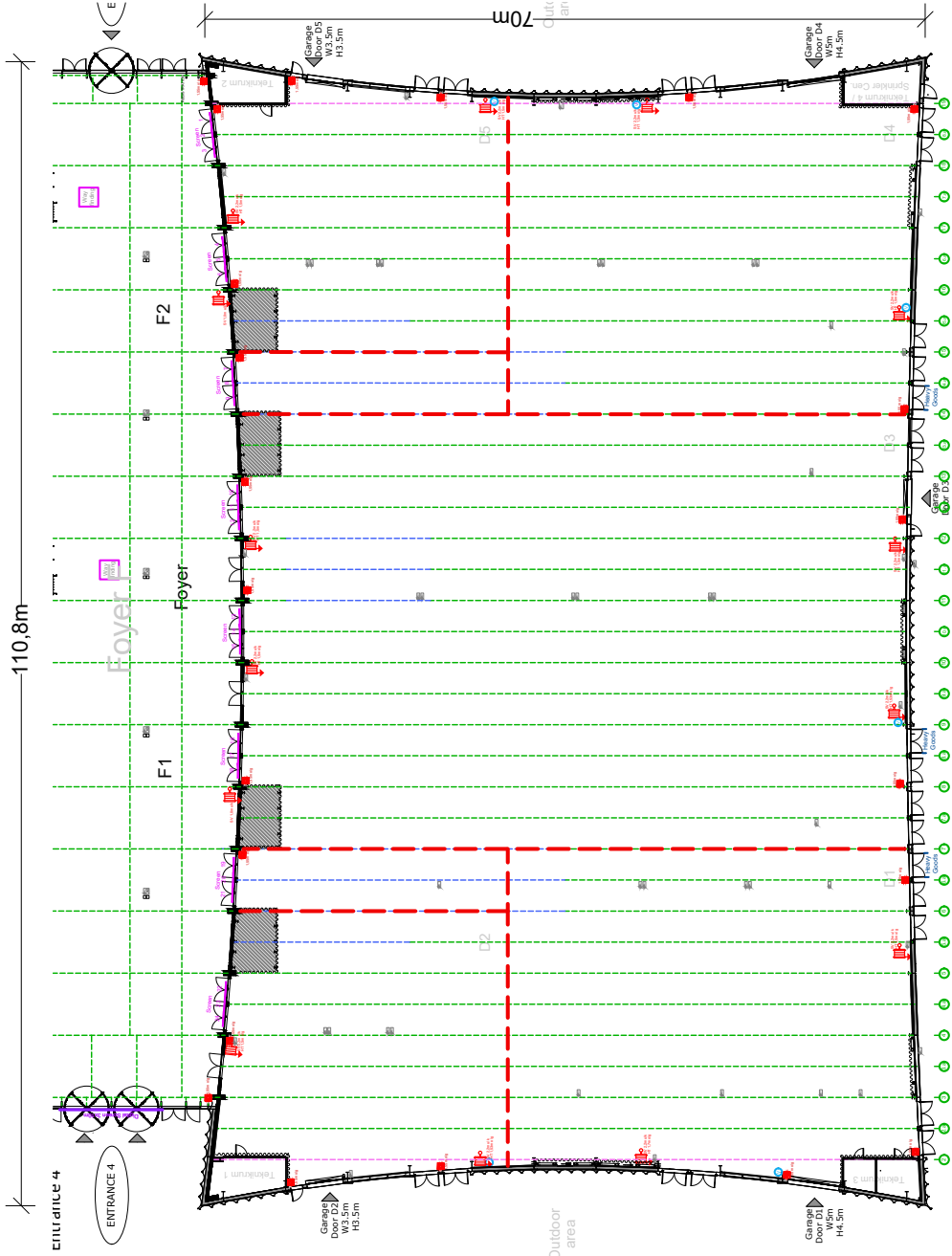
- Fire Restrictions Zone:
 - Yellow- Normal usage
 - Green- Special conditions and restrictions
 - Red- All Build up prohibited
- Brand Restrictions Zone:
 - Gul- Grænser indretning
 - Grøn- Specielle betingelser og restriktioner
 - Rød- Opbygning forbudt

HAL D Hall D

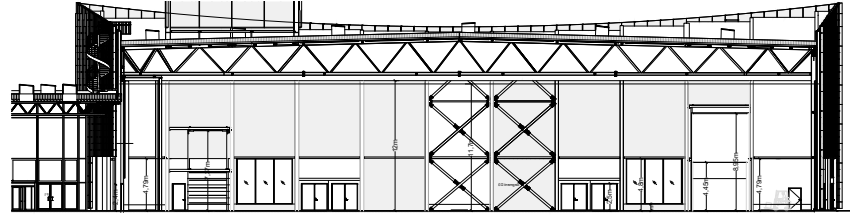
SCALE 1:750 - FORMAT A4



Snit øst Cross section east



Snit syd Cross section south



DETAILS Loft/Ceiling



SPÆR TIL RIGGNING
100kg per 100cm
Roof beam for rigging

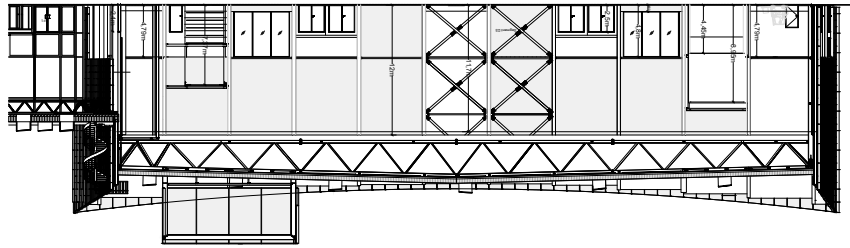
SPÆR TIL RIGGNING
60kg per 100cm
Roof beam for rigging

SPÆR TIL RIGGNING
50kg per 100cm
Roof beam for rigging

SPÆR - IKKE TIL OVERBELASTNING
Roof Non load beam

FOLDEVÆG
Movable Wall

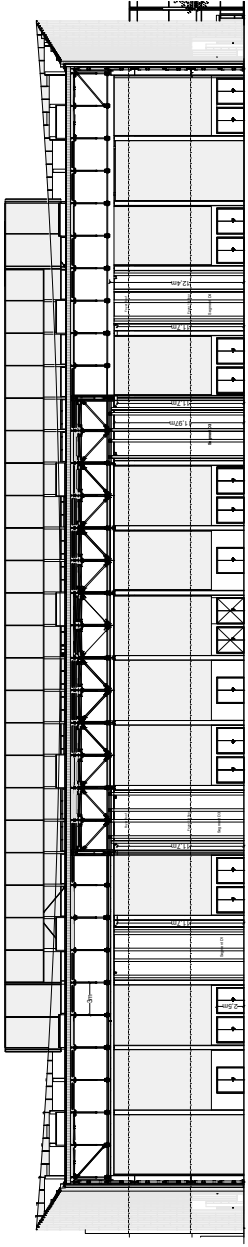
Snit nord Cross section north



HAL D

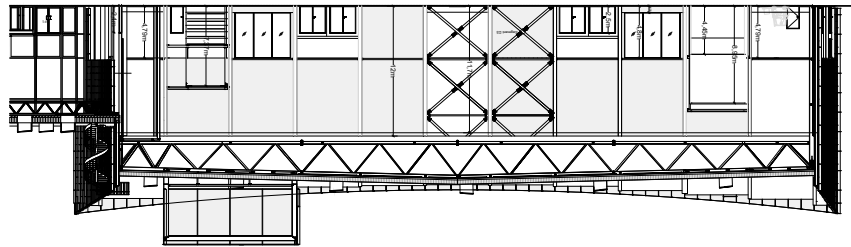
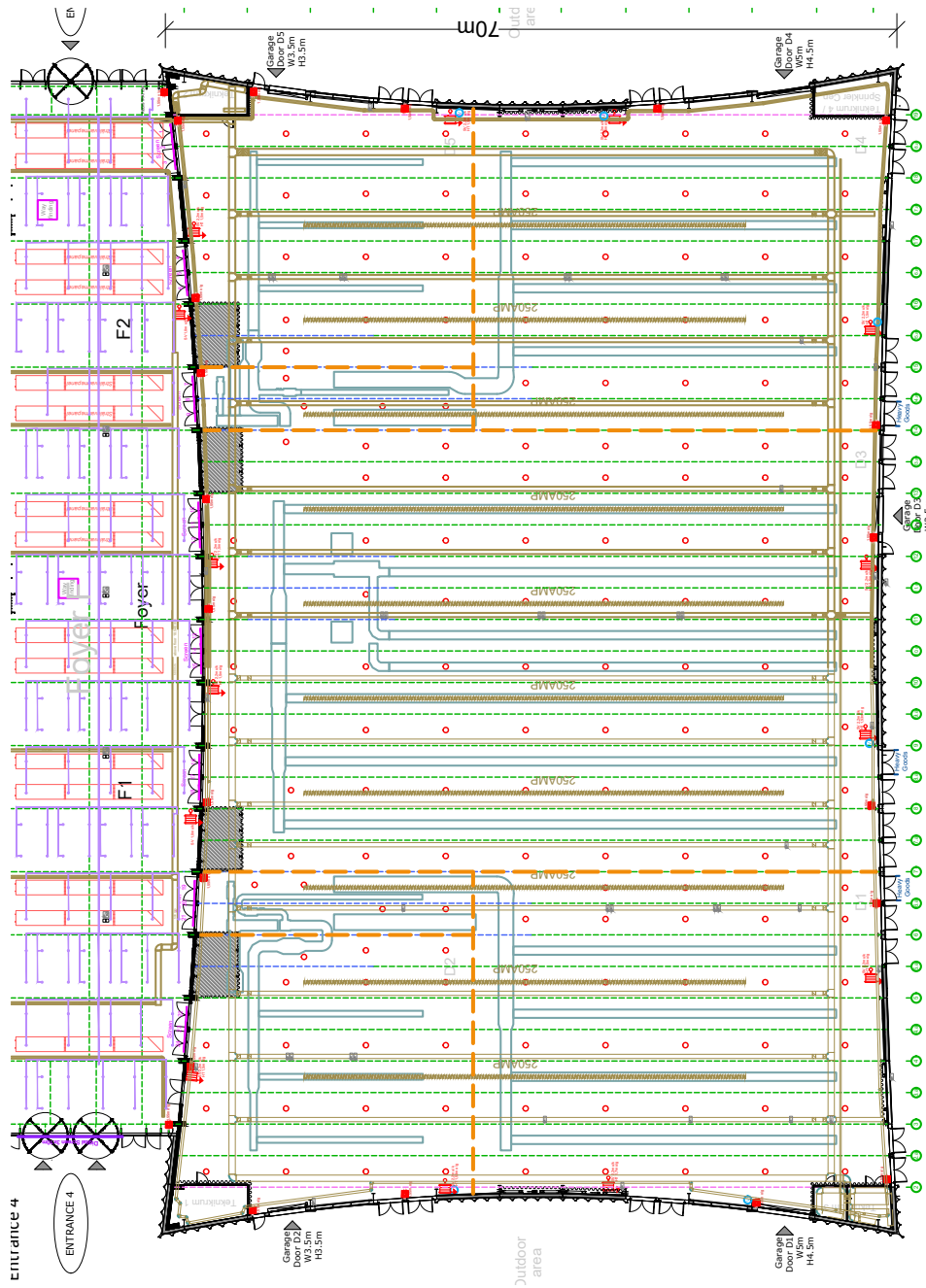
Hall D

SCALE 1:750 - FORMAT A4



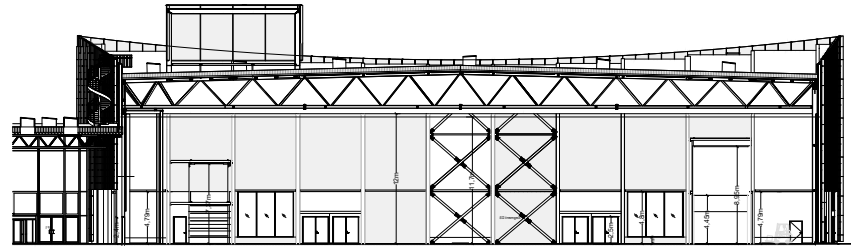
Snitt øst Cross section east

110,8m



Snitt nord Cross section north

Snitt syd Cross section south



DETAILS Loft/Ceiling

-  SLANGEVINDER
Fire-hose reel
-  SPÆR TIL RIGGNING
Roof beam for rigging
-  SPÆR - IKKE TIL OVERBELASTNING
Roof Non load beam
-  FOLDEVÆG
Movable Wall
-  LYSPENDEL
Light pendant
-  KABELBAKKE
Cable tray
-  VENTILATION
Ventilation

Hal E

– en kort beskrivelse

Adgang til hallen

På tegningen kan du se numrene for de enkelte porte, der giver adgang til hallen.

Hallens frihøjder

Hallens frihøjde, målt fra gulv til underkant af rig messelampe er 9,30m. Se side 21-22.

Loft/Ophængning i loft

Wirer:

Der kan monteres wire med en maks. belastning på 99 kg, dog afhængigt af øvrig belastning i loftet.

Kontakt venligst din Bella Center koordinator for godkendelse. Bella Center forbeholder sig ret til evt. at tilpasse placering.

Taljepunkter og rigging:

Der kan rigges i spær med en maksimal belastning på 500kg per knudepunkt, dog afhængigt af øvrig belastning i loftet.

eller

Der kan rigges i vinklet spær med en maksimal belastning på 250kg per knudepunkt, dog afhængigt af øvrig belastning i loftet.

Har du brug for rigning, bedes du kontakte din Bella Center koordinator for muligheder, validering og tilbud.

Bella Center forbeholder sig ret til evt. at tilpasse placering.

Belysning

Hallen er udstyret med permanent rigkonstruktioner og 150W Powerball Spots, farve 5000 kelvin, som skal tilkøbes jævnfør tilbud.

Til den generelle hal belysning hænger der (3x58 W) lysarmaturer.

Bemærk venligst, at sollys igennem glastaget kan være til gene ved brug af pc, video, osv.

Gulv

Installation af el, VVS, netværk og trykluft sker via kanaler i hallens betongulv. Kanalerne ligger i hallens længderetning med en indbyrdes afstand på 15 m.

Gulvet kan klare følgende belastninger:

Hjultryk (tvillingehjul)	5.500 kg/m ²
Punktbelastning fordelt på 15x15cm	4.000 kg
Max belastning (lastbil inkl. læs)	4.000 kg/m ²

Søjler

Hallens betonsøjler er 40x40cm eller 40x80cm.

Brandskab – må ikke tildækkes.

Luft

Hallen har opvarmet ventilation med separate køleunits.

Hall E – a brief description

Accessing the hall

Please refer to the floor plan where access points are indicated.

Ceiling heights

The ceiling height measured from the floor to the lower edge of the lighting truss is 9,30m. Please see page 21-22.

Ceiling/suspension in the ceiling

Dropwires:

Dropwires can be mounted with a maximum load of 99 kg, however, depending on other loads in the ceiling.

Please contact your Bella Center coordinator for approval. Bella Center reserves the right to to adjust placement.

Hoist and rigging:

Rigging can be done in beams with a maximum load of 500kg per node, but also depending on other loads in the ceiling.

or

Rigging can be done in angled beams with a maximum load of 250kg per node, however depending on other loads in the ceiling.

If you need rigging please contact your Bella Center coordinator for options, validation and offers.

Bella Center reserves the right to to adjust placement.

General lighting

The hall is equipped with permanent lighting truss with 150W Powerball Spots, color 5000 kelvin. The solution is offered according to quote.

General hall light fittings (3x58 W).

Please note that sunlight from the glass roof can cause inconvenience with reflected light when using pc's, videos etc.

Floor

Power, plumbing, network and compressed air will, if possible, be supplied via the sub-floor service ducts build-in the Centre Hall's concrete floor. These run from north to south at 15 m intervals throughout the length of the hall.

The floor can carry the following loads:

Wheel loads (twin wheels)	5,500 kg per sq.m.
Single-point loads per 15x15cm	4,000 kg
Max loads (load incl. weight of truck)	4,000 kg per sq.m.

Pillars

A limited number of free-standing concrete pillars are to be found in the northern end of the hall. These measure 40x40cm or 40x80cm.

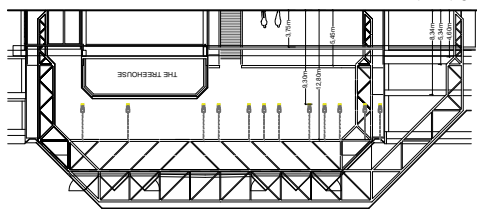
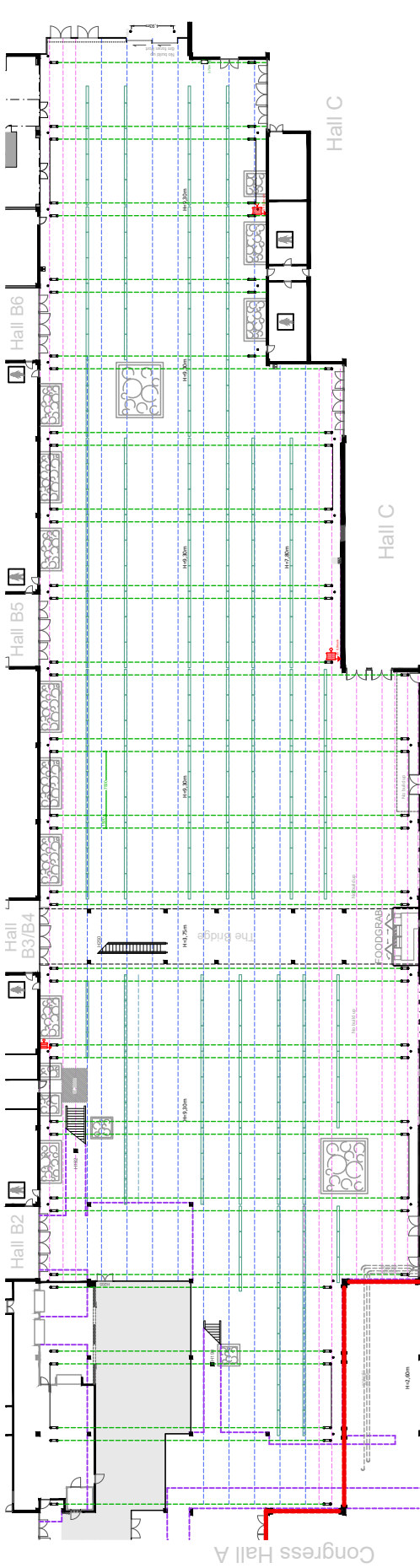
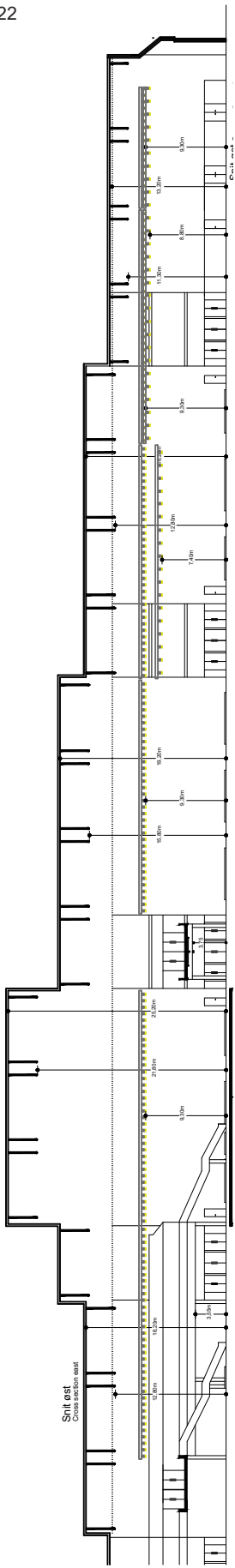
Fire hose reel – must not be concealed.

Air

The hall has heated ventilation with separate cooling units.

HAL E Hall E

SCALE 1:750 - FORMAT A4



DETAILS Loft/Ceiling

- 1x1m GRID
- 1 SAL, kant 1st floor ledge
- SLANGEVINDER Fire-hose reel
- SPÆR Beam
- LYS RIG MISPOTS Lighting truss with spots
- SØJLE 40x40CM Pillar 40x40cm
- SØJLE 40x80CM Pillar 40x80cm
- SØJLE/SPÆR 2x Ø22cm - L=97cm Pillar/Beam 2x Ø22cm - L=97cm

Foyer (F0-F7)

– en kort beskrivelse

Adgang til Foyer

På tegningen ses svingdørene, som udgør Indgang 4, 5 og 6, der giver adgang til Foyer F0-F7.
Gods tilkørsel bedes aftalt med arrangementskoordinator, da adgang er afhængig af den samlede udlejning af arealerne i den givne periode.

Hallens frihøjder 1. sal og stue

Lofthøjde i Foyer F1-F2, underkant spær/armatur, 10,5 meter
Lofthøjde i Foyer F3-F5 (under det nye dæk / nedsænket loft), 3,6 meter
Lofthøjde i Foyer F6 (under det nye dæk / nedsænket loft), 3,6 meter
Lofthøjde i Foyer F7 underkant spær, 8,25 meter
Såfremt man har et specifikt krav til en lofthøjde i et givent område kontakt venligst Bella Center

Belysning

Hallen er udstyret med en grundbelysning bestående af lyskilder monteret under spær i det dobbelthøje rum og indbygget i det nedsænkede loft.
Lyskilde: Skinne armatur, Solar Light LQ60. LED 2500-4000 Lumen out. 3000 Kelvin, MacAdam SDCM 3. Driver: Dali.

Loft/Ophængning i loft

Wirer: Der kan foretages lette ophæng, så som banner.
Detailtegningen indeholder information om spær eller riggepunkternes placering.

Kontakt venligst din koordinator i Bella Center for muligheder, validering og tilbud.
Bella Center forbeholder sig ret til evt. at tilpasse placering.

Gulv

F1, F2, F4

Gulvet er et flisebelagt betongulv. Flisen er primært en lys betonflise, afbrudt af sorte fliserækker.
Gulvet kan klare følgende belastninger:
15x15 cm jævnt fordelt trykflade = 2500 kg
30x30 cm jævnt fordelt trykflade = 4000 kg

F5

Gulvet er dækket af marmor/gulvtæppe.
Gulvet kan klare følgende belastninger:
Punktbelastning fordelt på 15x15cm = 4.000 kg
Kørsel i områderne med udendørskøretøjer er ikke tilladt

F0, F3, F6 og F7

Gulvet er et marmorbelagt gulv .
Gulvet kan klare følgende belastninger:
Punktbelastning fordelt på 15x15cm = 400 kg
Max belastning = 400 kg/m²
Motordrevne køretøjer i området skal aftales med Bella Center.

Vinduer og mørklægning

På hallens nord- og sydvendte vægge, er der glasfacader, som giver adgang til dagslys. Det samme er gældende for ovenlys-vinduerne i det meste af hallerne F1-F4s lofter.

Vinduerne kan ikke mørklægges.

Foyer (F0-F7) – a brief description (1 of 2)

Accessing Foyer

The drawing shows the revolving doors, which make up Entrance 4, 5 and 6, which give access to Foyer F0-F7.
Driveway for Goods should be agreed with the event coordinator, as access depends on the total use of the areas in the given period.

Ceiling height

Ceiling height in Foyer F1-F2, lower edge of truss / light fittings, 10.5 m
Ceiling height in Foyer F3-F5 (suspended ceiling), 3.6 m
Ceiling height in Foyer F6 (suspended ceiling), 3.6 m
Ceiling height in Foyer F7 lower edge of truss, 8.25 m
If you have a specific requirement for a ceiling height in any given area, please contact Bella Center.

General lighting

Basic lighting is mounted under truss in the double-height room, and built into the lowered ceiling.
Light source: Rail luminaire, Solar Light LQ60. LED 2500-4000 Lumen out.
3000 Kelvin, MacAdam SDCM 3. Driver: Dali.

Ceiling/ suspension in the ceiling

Wires: Light suspensions can be made, such as a banners.
The detail drawings for stands will include information on the location of the beams or rigging points.

Please contact your coordinator at Bella Center for options, validation and offers.
Bella Center reserves the right to adjust placement.

Floor

F1, F2, F4

The floor is a tiled concrete floor. The tile is primarily a light concrete tile, interrupted by black rows of tiles.
The floor can withstand the following loads:
Point load distributed per 15x15cm 2500 kg
Point load distributed per 30x30cm 4000 kg

F5

The floor is covered with marble / carpet.
The floor can withstand the following loads:
Point load distributed on 15x15cm = 4,000 kg
Driving in areas with outdoor vehicles is not permitted

F0, F3, F6 and F7

The floor is a marble floor.
The floor can withstand the following loads:
Point load distributed on 15x15cm = 400 kg
Max load = 400 kg / m²
Motor vehicles in the area must be agreed with Bella Center.

Windows and blackout

On the north and south-facing walls of the hall, there are glass facades that provides access to daylight. The same applies to the skylights in most of the ceilings of halls F1-F4.

The windows cannot be blacked out

Foyer (F0-F7)

– fortsat

Vægge

Brandskabe og slangevindere – må ikke tildækkes.
Væggene varierer i udtryk fra område til område. Nogle er beklædt med trælammeler i en kombination med perforerede stålplader. Andre er beklædt med planter og en endelig er der malede betonvægge.

Elevatore

Der er følgende elevatore til Balkonrøderne:

F0 elevator (til Aud.10-12 backstage)
Max belastning, 21 personer - Max belastning, 1600 kg
Døråbning (bxh): 110 x 204 cm
Elevator dybde: 260 cm - Elevator bredde: 140
Elevatortype: Personeelevator (ikke gods)

F3 elevator (til Balcony 1)
Max belastning, 8 personer - Max belastning, 630 kg
Døråbning (bxh): 90 x 207 cm
Elevator dybde: 140 cm - Elevator bredde: 110 cm
Elevatortype: Personeelevator (ikke gods)

F6 elevator (til Balcony 3)
Max belastning, 13 personer - Max belastning, 1000 kg
Døråbning (bxh): 100 x 210 cm
Elevator dybde: 210 cm - Elevator bredde: 110 cm
Elevatortype: Personeelevator (ikke gods)

F6 elevator (til Balcony 4) (gods)
Max belastning, 13 personer - Max belastning, 1000 kg
Døråbning (bxh): 120 x 200 cm (220cm indeni)
Elevator dybde: 240 cm - Elevator bredde: 120 cm
Elevatortype: Godselevator

F7 elevator (ved Lokale 22)
Max belastning, 8 personer - Max belastning, 625 kg
Døråbning (bxh): 91x 198 cm
Elevator dybde: 113 cm - Elevator bredde: 125 cm
Elevatortype: Personeelevator (ikke gods)

Gods til balkonrøder

Det er muligt at benytte godselevator fra Foyer F6 til Balkon 3/4

Desuden er der muligt, at åbne gelænder og dermed løfte paller fra stueetagen fra Foyer F1 til Balkon 1, fra Foyer F2 til Balkon 2 og fra Foyer F6 til Balkon 3/4.
Kontakt venligst din kontaktperson i Bella Center for muligheder, validering og tilbud.

Luft, Varme / køling

Foyer F0, F1, F2, F3 og F4:
Foyererne har en kombination af strålevarme og aircondition.
Foyer F5:
Foyer F5 har aircondition.
Foyer F6 og F7:
Foyer F6 og F7 har ventilation, samt delvis opvarmning fra gulv og ribberør i facaden.

Foyer (F0-F7) – a brief description (2 of 2)

Walls

Fire cabinet and hose reel – must not be concealed.
The walls vary in expression from area to area. Some are covered with wooden slats in combination with perforated steel plates. Others are covered with plants and finally there are painted concrete walls.

Elevators

Following elevators to 1st floor areas:

F0 elevator (to Aud. 10-12 backstage)
Max load, 21 people - Max load, 1600 kg
Door opening (wxh): 110 x 204 cm
Elevator depth: 260 cm - Elevator width: 140
Elevator type: Personnel elevator (not freight)

F3 elevator (to Balcony 1)
Max load, number 8 people - Max load, number 630 kg
Door opening (wxh): 90 x 207 cm
Elevator depth: 140 cm - Elevator width: 110 cm
Elevator type: Personnel elevator (not freight)

F6 elevator (to Balcony 3)
Max load, 13 people - Max load, 1000 kg
Door opening (wxh): 100 x 210 cm
Elevator depth: 210 cm - Elevator width: 110 cm
Elevator type: Personnel elevator (not freight)

F6 elevator (to Balcony 4) (freight)
Max load, 13 people - Max load, 1000 kg
Door opening (wxh): 120 x 200 cm (220 inside)
Elevator depth: 240 cm - Elevator width: 120 cm
Elevator type: Freight elevator

F7 elevator (at meeting room 22):
Max load, 8 people - Max load, 625 kg
Door opening (wxh): 91x 198 cm
Elevator depth: 113 cm - Elevator width: 125 cm
Elevator type: Personnel elevator (not freight)

Goods to balcony areas

It is possible to use the freight elevator from Foyer F6 to Balcony 3/4

In addition, it is possible to open railings and thus lift pallets from the ground floor from Foyer F1 to Balcony 1, from Foyer F2 to Balcony 2 and from Foyer 6 to Balcony 3/4.
Please contact your contact at Bella Center for options, validation and offers.

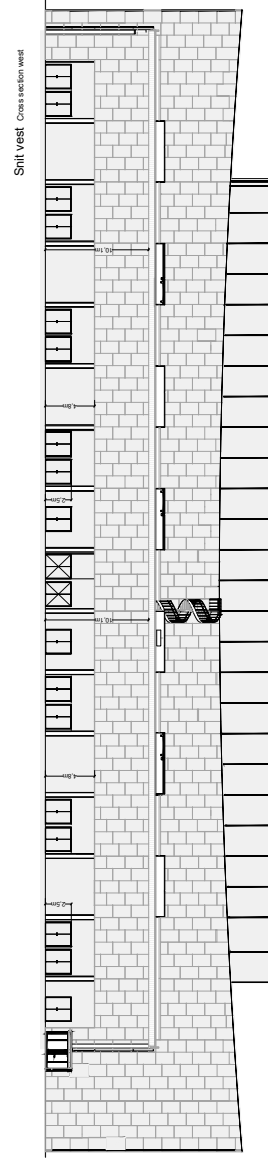
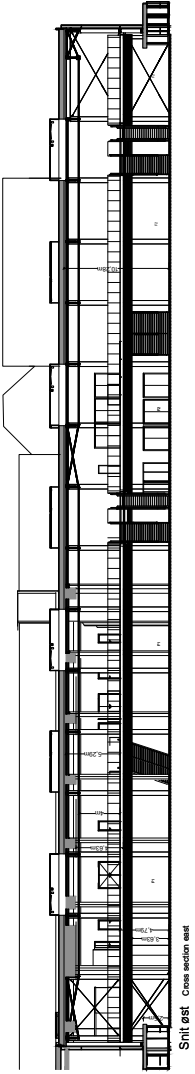
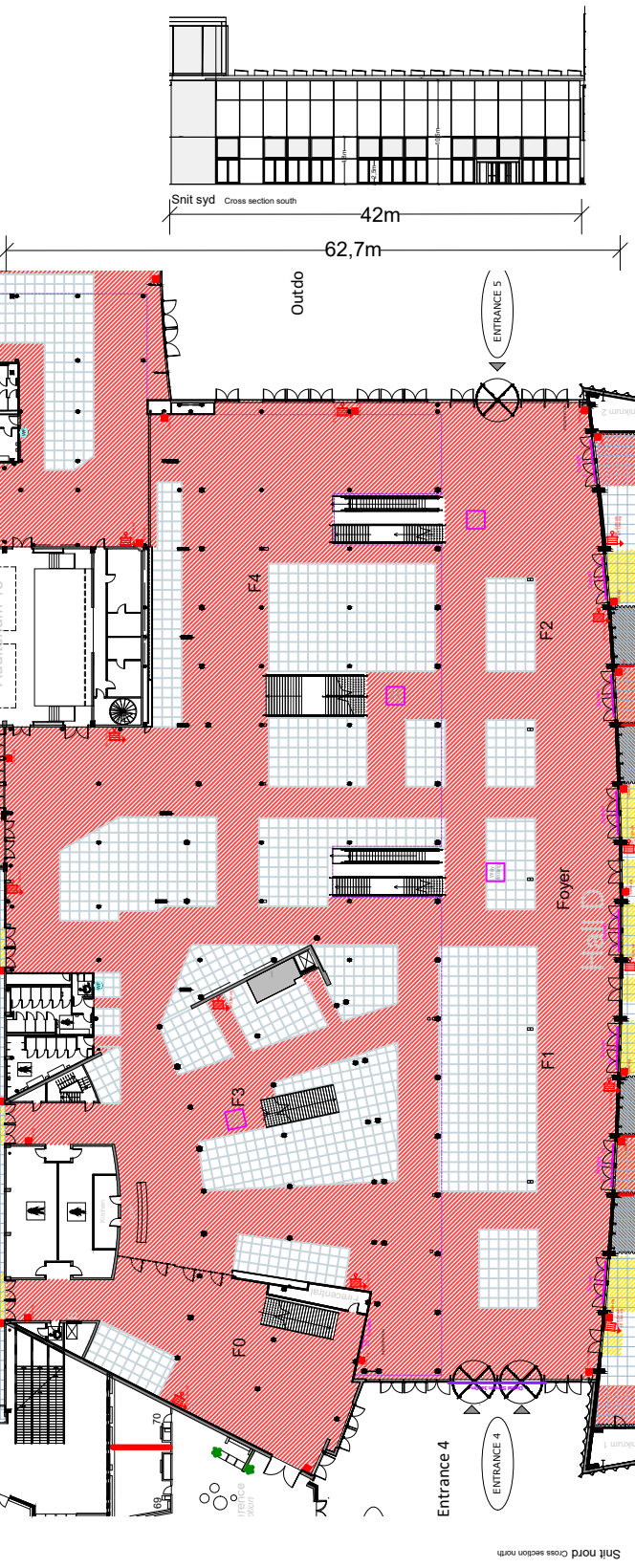
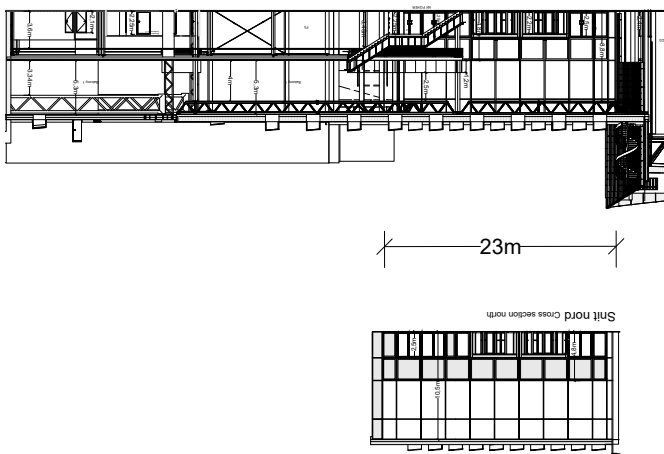
Air, heat/cooling

Foyer F0, F1, F2, F3 & F4:
Foyers has a combination of radiant heating and air conditioning.
Foyer F5:
Foyer F5 has air conditioning.
Foyer F6 & F7
Foyer F6 & F7 has ventilation as well as partial heating from floor and ribbed pipes in the facade.

Foyer F0-F4

Foyer F0-F4

SCALE 1:750 - FORMAT A4



DETAILS Gulv/Floor

- 1x1m GRID
- BRANDTRYK Fire-alarm

- SLANGEVINDER Fire-hose reel

- SØJLER Pillars

- VINDFANG Storm flap

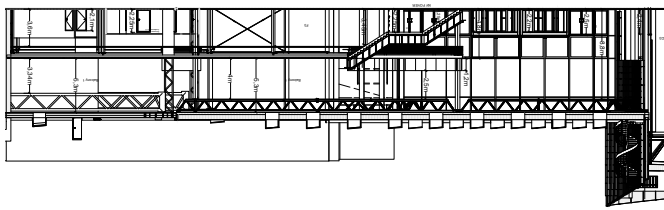
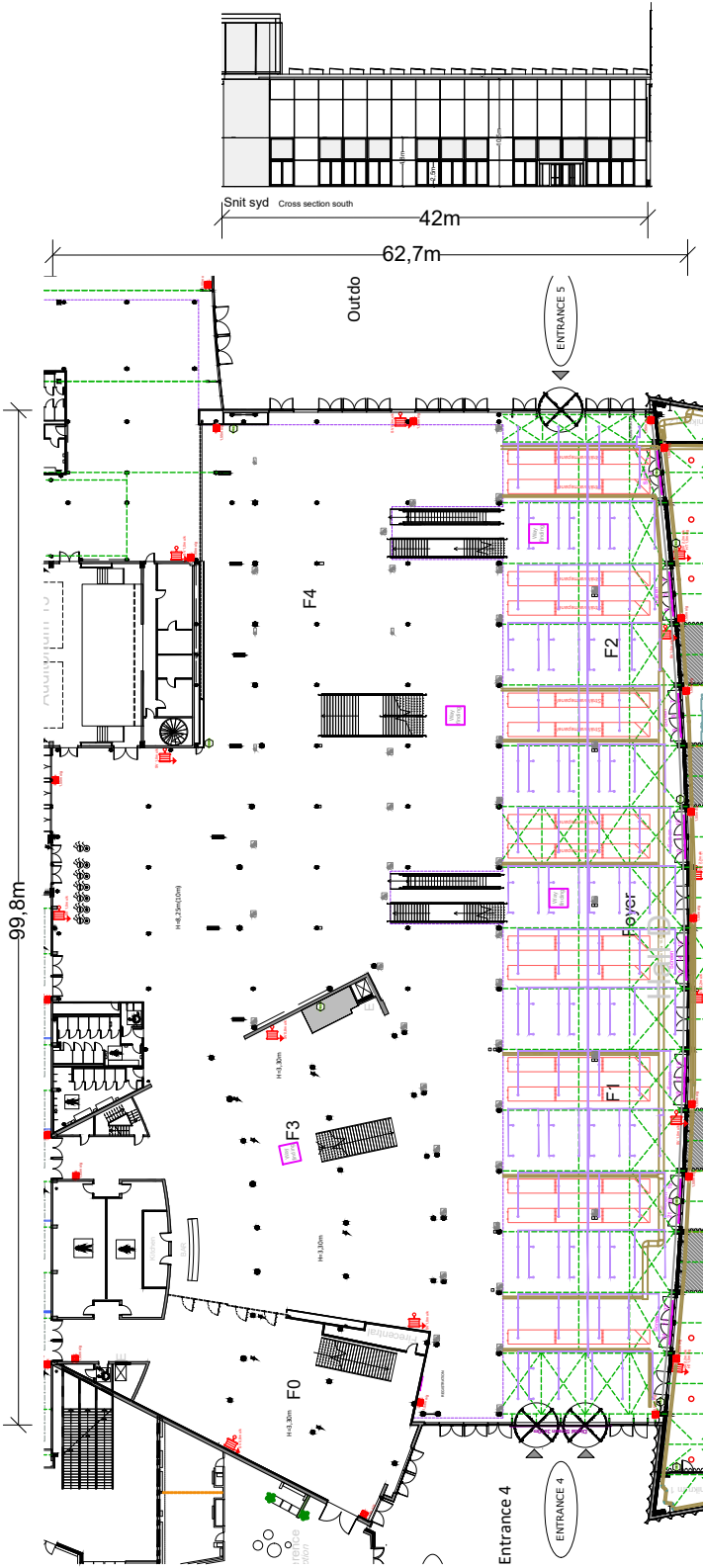
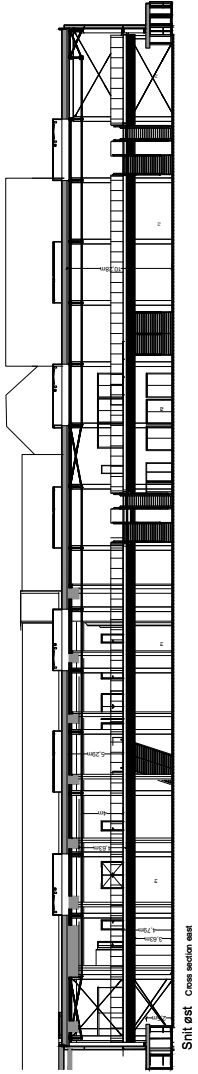
- 1 SAL., kant 1st floor ledge

- Brand Restriktions Zone:
 - Gul- Begrenset indretning
 - Orange- Bærelige betingelser og restriktioner
 - Red- Opbygning forbudt

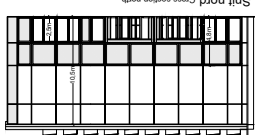
- Fire Restriktions Zone:
 - Yellow- Limited usage
 - Orange- Special conditions and restrictions
 - Red- All Build-up prohibited

Foyer F1-F2 Foyer F1-F2

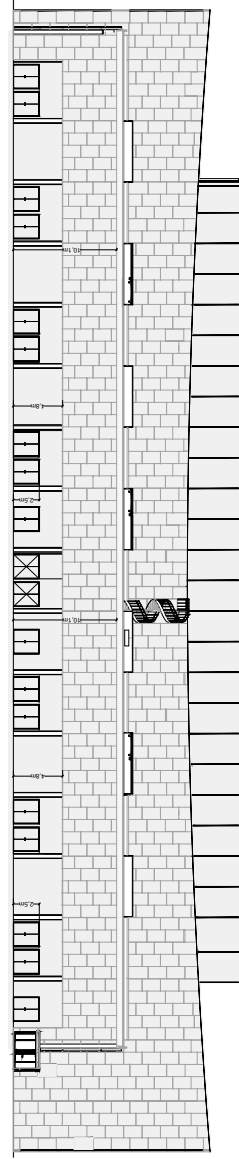
SCALE 1:750 - FORMAT A4



23m



Snitt vest. Cross section west



DETAILS Loft/Ceiling

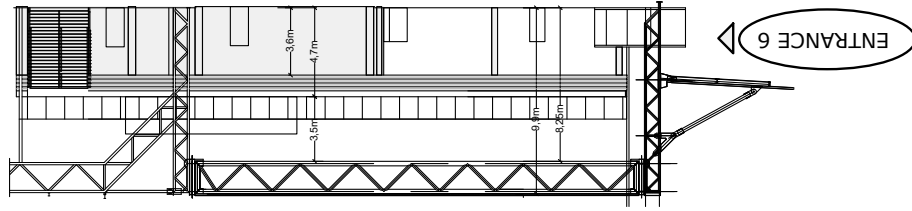
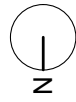
- 1x1m GRID
- SØJLER Pillars
- SPÆR Beam
- SPRINKLING Sprinkling
- KABELKANAL Cable tray
- VENTILATON Ventilation
- STRÅLEVARME Radiant heat

1 SAL, kant
1st floor ledge

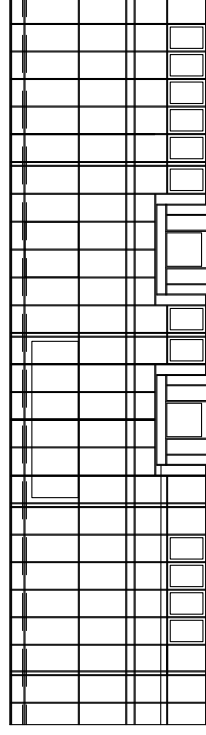
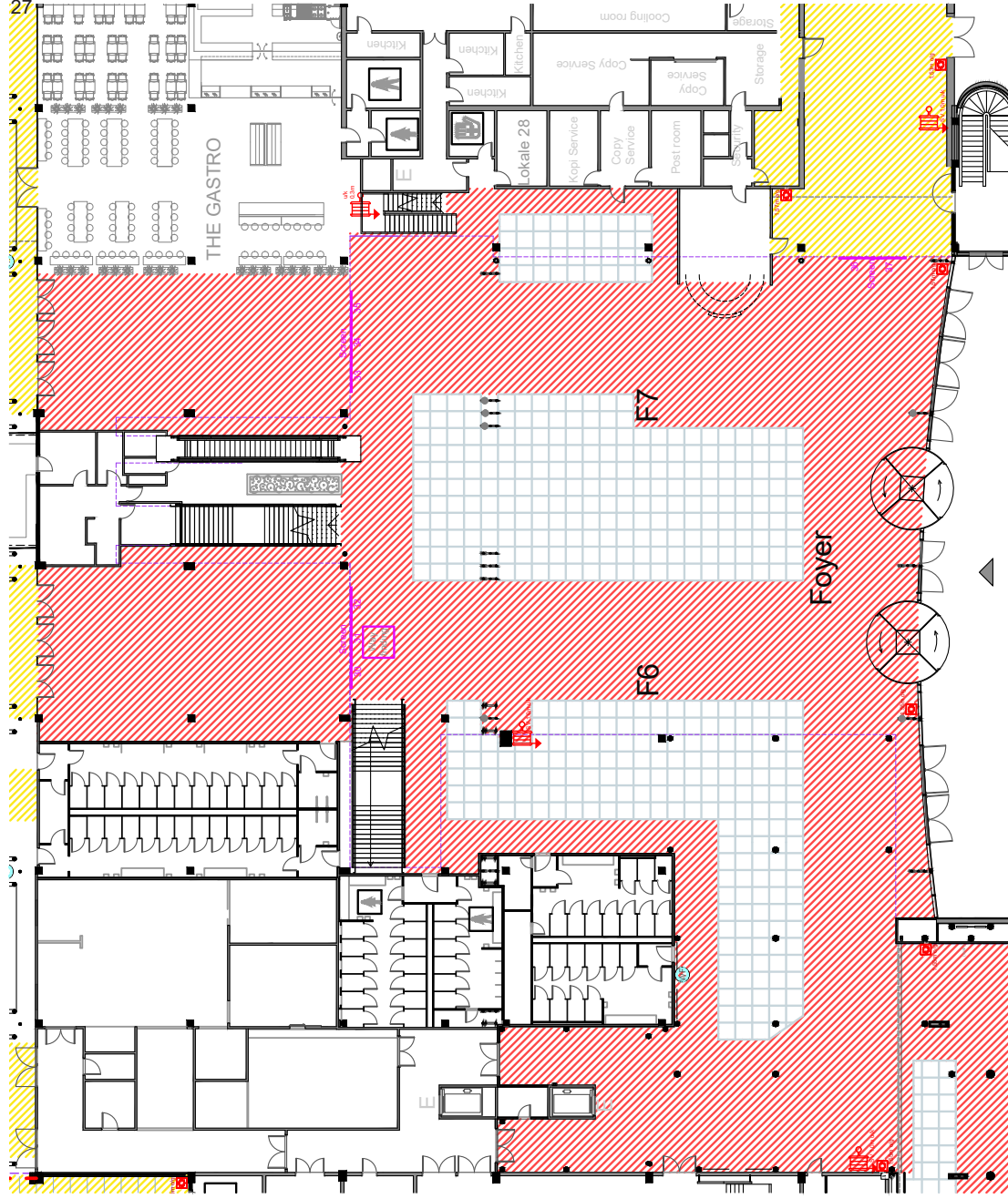
Foyer F6/F7

Foyer F6/F7

SCALE 1:500 - FORMAT A4



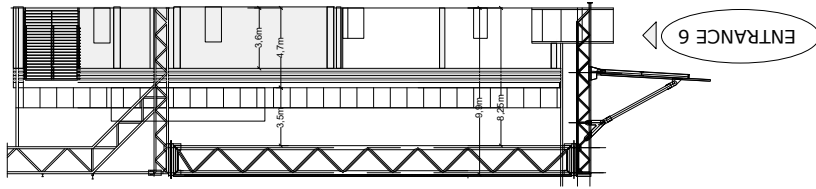
Snit nord Cross section north



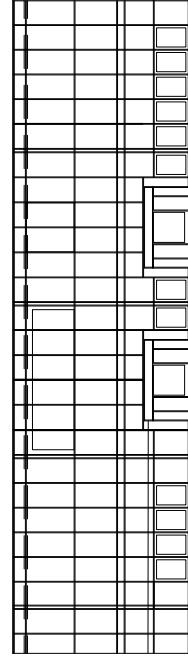
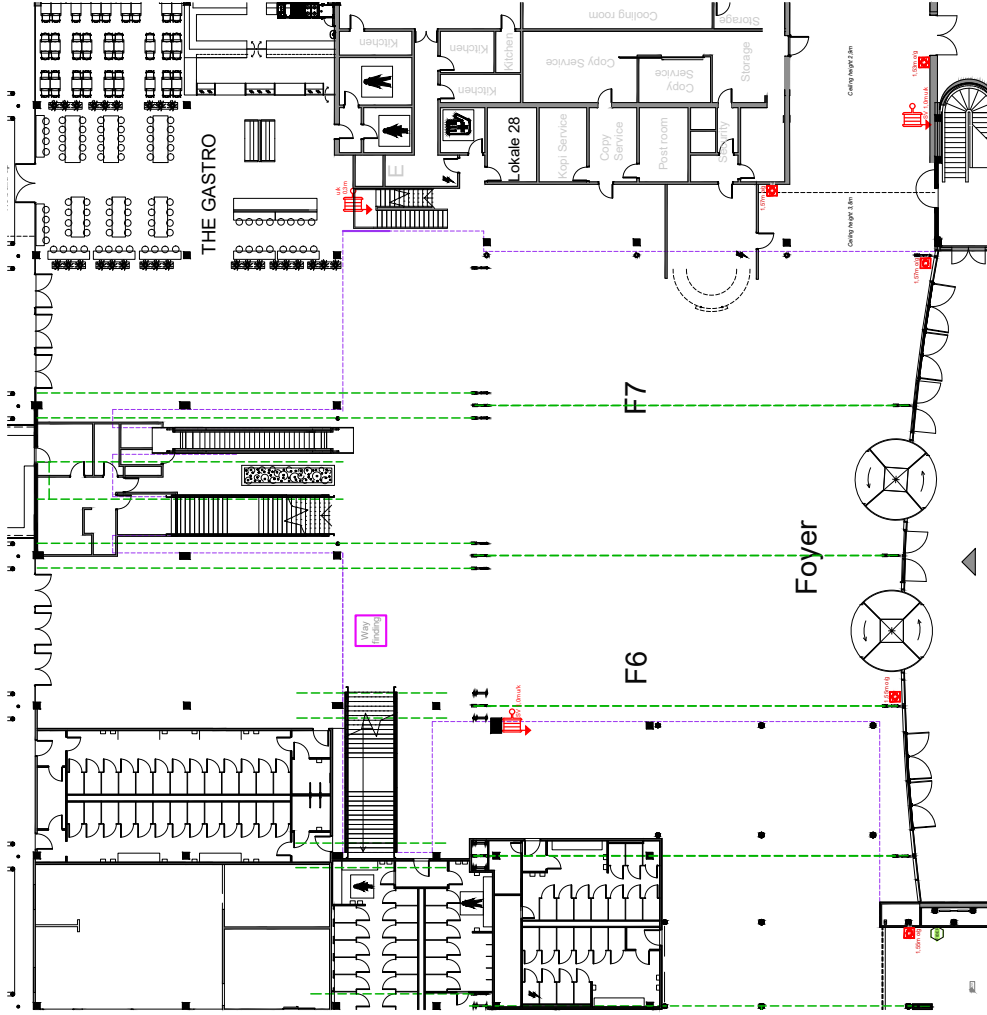
Facade øst Facade east

Foyer F6/F7 Foyer F6/F7

SCALE 1:500 - FORMAT A4



Snit nord Cross section north



Facade øst Facade east

DETAILS Loft/Ceiling

1x1m GRID
1 SAL, kant 1st floor ledge

SLANGEVINDER Fire-hose reel

SPÆR Beam

SØJLE 40x40CM Pillar 40x40cm

SØJLE 40x80CM Pillar 40x80cm

SØJLE/SPÆR 2X Ø22CM - L=97CM Pillar/Beam 2x Ø22cm - L=97cm



Balcony 1-5

– en kort beskrivelse

Adgang til balkon

På tegningen ses trapper og rulletrapper til 1 sal.

Rummets frihøjder

Lofthøjde Balkon 1-2, underkant spær/armatur, 4,2-5,2 meter

Lofthøjde Balkon 3, underkant spær, 3,5 meter

Såfremt man har et specifikt krav til en lofthøjde i et givent område skal dette afklares med Bella Center

Belysning Balcony 1-2

Balkonen er udstyret med en grundbelysning bestående af lyskilder monteret under spær

Lyskilde: Skinne armatur, Solar Light LQ60. LED 2500-4000 Lumen out.

3000 Kelvin, MacAdam SDCM 3. Driver: Dali.

Belysning Balcony 3-4

Balkonen er udstyret med en grundbelysning bestående af lyskilder monteret i loftet.

Lyskilde: Pendel lampe, 4*42 watt lysrør, 3000 kelvin, 200 lumen, styret af CTS tænd/sluk.

Loft/Ophængning i loft

Wirer: Der kan foretages lette ophæng, så som banner i spær.

Kontakt venligst Bella Center ved behov.

Bella Center forbeholder sig ret til evt. at tilpasse placering.

Gulv

Gulvet er et flisebelagt betongulv. Flisen er primært en lys betonflise, afbrudt af sorte fliserækker

Gulvet kan klare følgende belastninger:

Balkongulvet kan klare en fladelast på 500 kg/m² samt en last fra palleløfter på 1000 kg.

Ved liftkørsel skal der anvendes personløftere på maks. 700 kg. ekskl. Fører

Vinduer og mørklægning

Vinduerne kan ikke mørklægges.

Vægge

Brandskab og slangevinder – må ikke tildækkes.

Væggene varierer i udtryk fra område til område på balkonen.

Nogle er udformet i beton, andre i gips.

Elevatore

Der er følgende elevatore til stueetagen

Balkon 1 elevator (til F3)

Max belastning, 8 personer

Max belastning, 630 kg

Døråbning (bxh): 90 x 207 cm

Elevator dybde: 140 cm

Elevator bredde: 110 cm

Elevatortype: Personeelevator (ikke gods)

fortsættes på næste side...

Balcony (1-5) – a brief description (1 of 2)

Accessing Balcony

The drawing shows stairs and escalators to 1 floor.

Ceiling height

Ceiling height in Balcony 1-2, lower edge of truss / light fittings, 4,2-5,2 m

Ceiling height Balcony 3, lower edge of truss, 3.5 meters

If you have a specific requirement for a ceiling height in a given area, please contact Bella Center for clarification.

General lighting Balcony 1-2

Basic lighting is mounted under truss in the double-height room, and built into the lowered ceiling.

Light source: Rail luminaire, Solar Light LQ60. LED 2500-4000 Lumen out.

3000 Kelvin, MacAdam SDCM 3. Driver: Dali.

General lighting Balcony 3-4

Basic lighting is mounted in the ceiling

Light source: Pendant, 4 * 42 watt tubular lighting, 3000 kelvin, 200 lumens, controlled by CTS on / off.

Ceiling/ suspension in the ceiling

Wires: Light suspensions can be made, such as a banners.

Please contact Bella Center for options, validation and offers.

Bella Center reserves the right to adjust placement.

Floor

The floor is a tiled concrete floor. The tile is primarily a light concrete tile, interrupted by black rows of tiles

The floor can withstand the following loads:

The balcony floor can handle a surface load of 500 kg pr. M², as well as a load from pallet lifts of 1000 kg.

When driving a lift, use lifts with a max. of 700 kg excl. Driver

Windows and blackout

The windows cannot be blacked out

Walls

Fire cabinet and hose reel – must not be concealed.

The walls vary in expression from area to area. Some are designed in concrete, others in plaster

Elevators

Following elevators to ground floor areas:

Balcony 1 elevator (to F3)

Max load, number 8 people

Max load, number 630 kg

Door opening (wxh): 90 x 207 cm

Elevator depth: 140 cm

Elevator width: 110 cm

Elevator type: Personnel elevator (not freight)

to be continued on the following page...

Balcony 1-5

– fortsat

Elevatorer

Balkon 3 elevator (til F6),
 Max belastning, 13 personer
 Max belastning, 1000 kg
 Døråbning (bxh): 100 x 210 cm
 Elevator dybde: 210 cm
 Elevator bredde: 110 cm
 Elevator type: Personeelevator (ikke gods)

Balkon 4 elevator (gods) (til køkken F6)
 Max belastning, 13 personer - Max belastning, 1000 kg
 Døråbning (bxh): 120 x 200 cm (220cm indeni)
 Elevator dybde: 240 cm - Elevator bredde: 120 cm
 Elevator type: Godselevator

Aud. 10-12 backstage elevator (til F0)
 Max belastning, 21 personer
 Max belastning, 1600 kg
 Døråbning (bxh): 110 x 204 cm
 Elevator dybde: 260 cm
 Elevator bredde: 140
 Elevator type: Personeelevator (ikke gods)

Gods til Balcony områder

Det er muligt at benytte godselevator fra Foyer F6 til Balkon 3/4 efter nærmere aftale med Bella center.
 Desuden er der muligt, at åbne gelænder og dermed løfte paller med gaffeltruck fra stueetagen fra Foyer 1 til Balkon 1, fra Foyer F2 til Balkon 2 og fra Foyer F6 til Balkon 3.

Luft, Varme / køling

Balkonerne har en kombination af strålevarme og aircondition.

Balcony (1-5) – a brief description (2 of 2)

Elevators

*Balcony 3 elevator (to F6)
 Max load, 13 people
 Max load, 1000 kg
 Door opening (wxh): 100 x 210 cm
 Elevator depth: 210 cm
 Elevator width: 110 cm
 Elevator type: Personnel elevator (not freight)*

*Balcony 4 elevator (freight) (to kitchen F6)
 Max load, 13 people - Max load, 1000 kg
 Door opening (wxh): 120 x 200 cm (220 inside)
 Elevator depth: 240 cm - Elevator width: 120 cm
 Elevator type: Freight elevator*

*Aud. 10-12 backstage elevator (to F0)
 Max load, number 21 people
 Max load, number 1600 kg
 Door opening (wxh): 110 x 204 cm
 Elevator depth: 260 cm
 Elevator width: 140
 Elevator type: Personnel elevator (not freight)*

Goods to Balcony areas

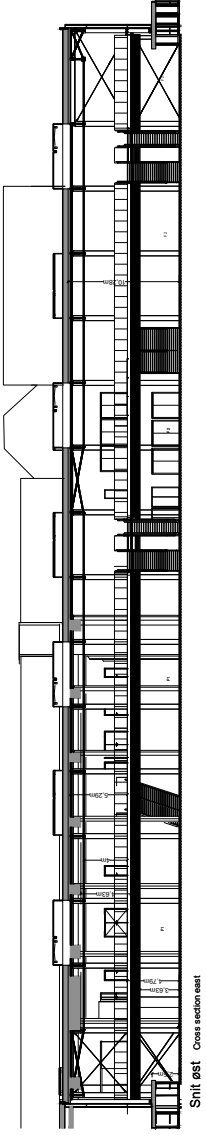
It is possible to use the freight elevator from Foyer F6 to Balcony 3/4. In addition, it is possible to open railings and thus lift pallets with a forklift from the ground floor Foyer F1 to Balcony 1, from Foyer F2 to Balcony 2 and from Foyer F6 to Balcony 3. Please contact Bella Center for further coordination.

Air, heat / cooling

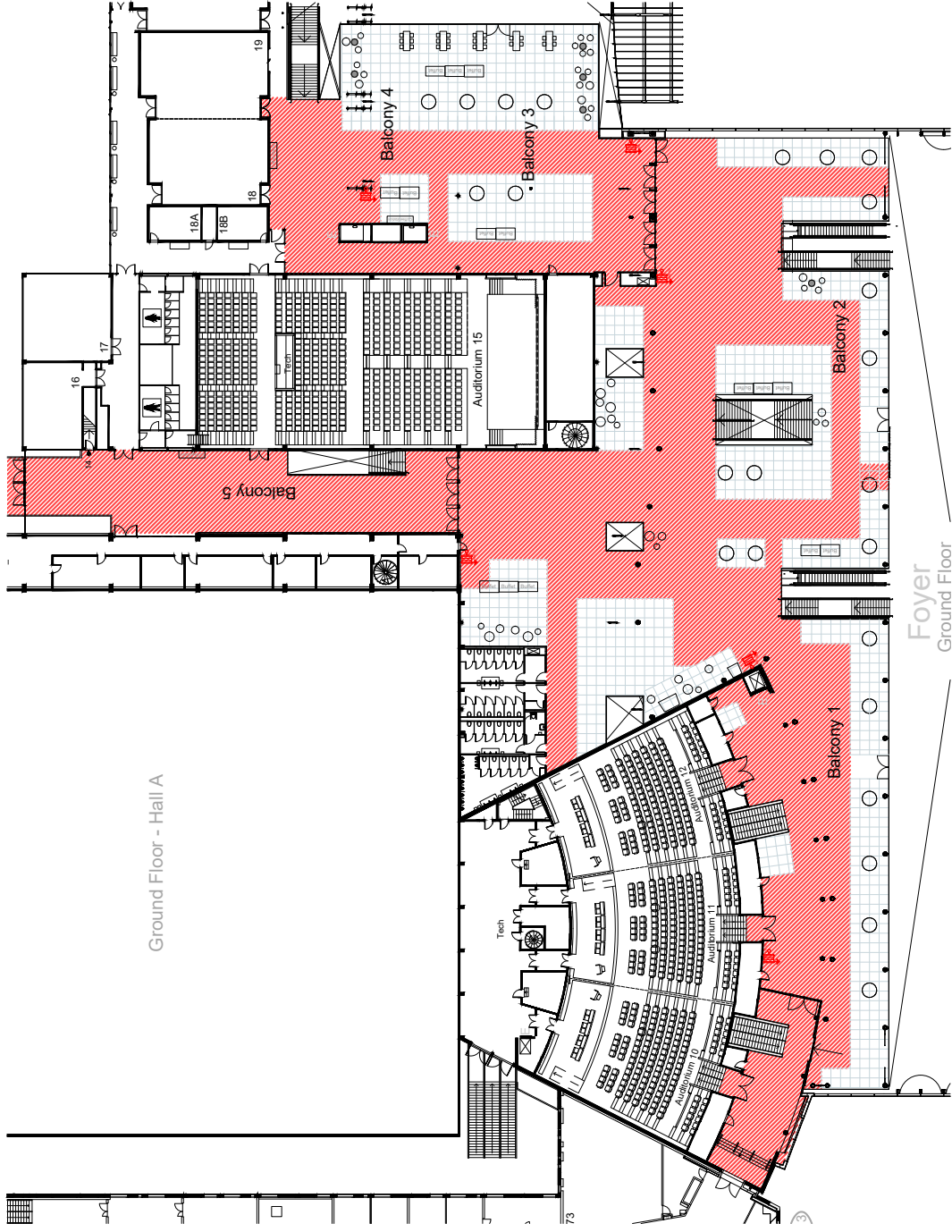
The Balcony's has a combination of radiant heating and air conditioning.

1 Sal Balcony 1-2 & 5 1st Floor Balcony 1-2 & 5

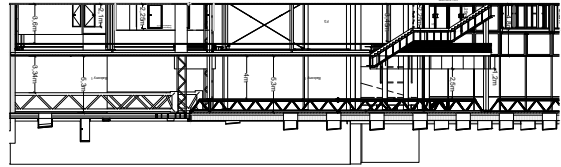
SCALE 1:750 - FORMAT A4



Snit øst Cross section east



Snit nord Cross section north



DETAILS Gulv/Floor

- 1x1m GRID
- BR BRANDTRYK Fire-alarm

- SLANGEVINDER Fire-hose reel

- SØJLER Pillars

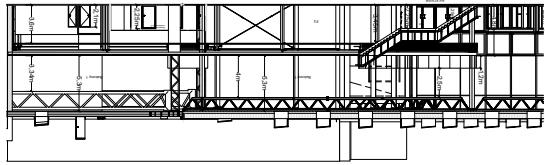
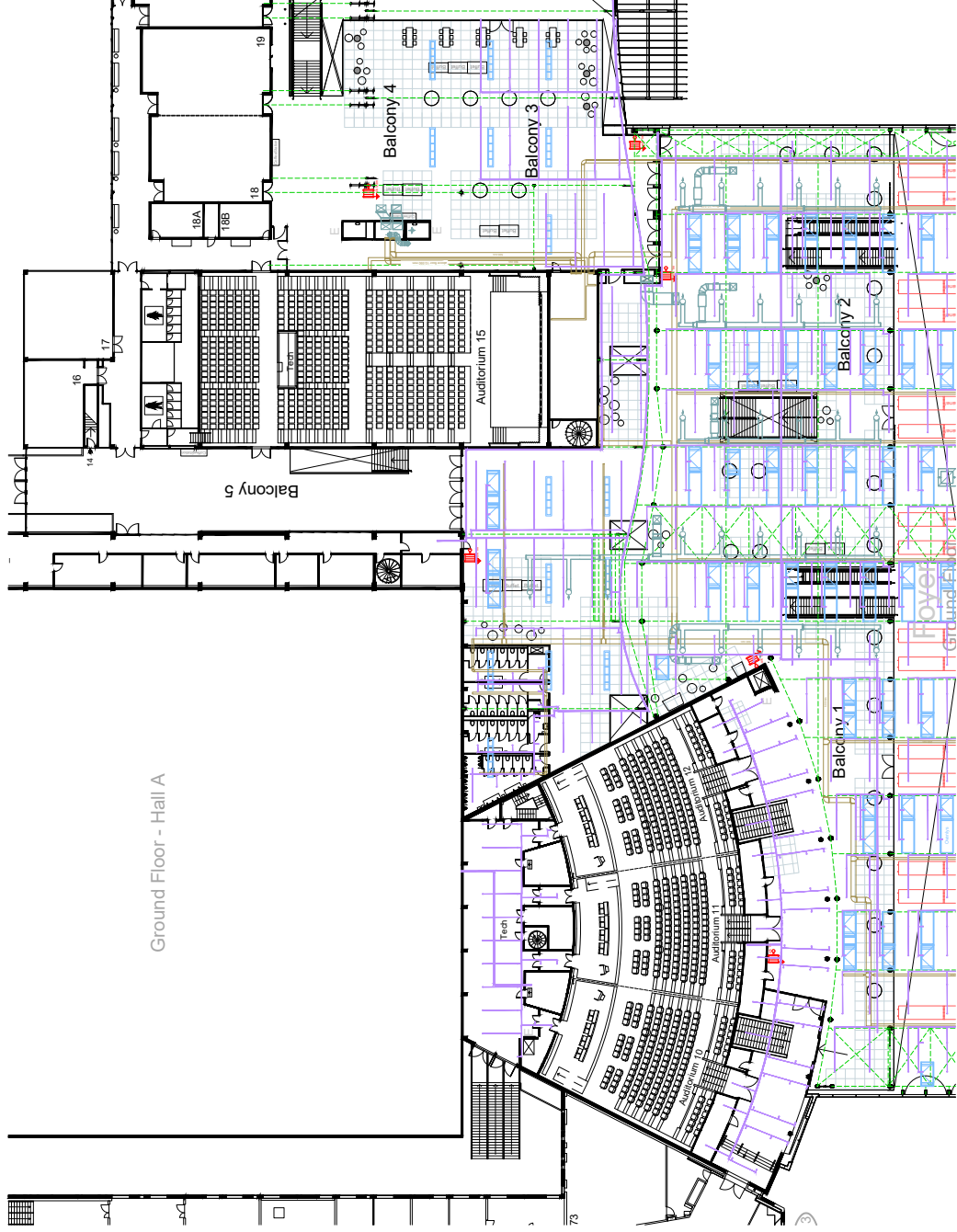
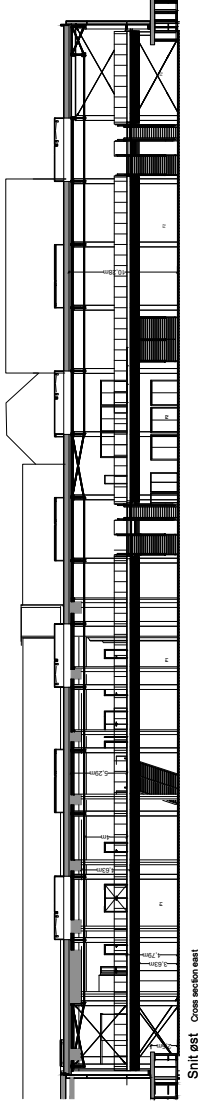
- VINDFANG Storm flap

- Brand Restriktions Zone:**
- Gul- Begrænset indretning
 - Orange- Særlige betingelser og restriktioner
 - Red- Opbygning forbudt

- Fire Restrictions Zone:**
- Yellow- Limited usage
 - Orange- Special conditions and restrictions
 - Red- All Build up prohibited

1 Sal Balcony 1-2 & 5 1st Floor Balcony 1-2 & 5

SCALE 1:750 - FORMAT A4

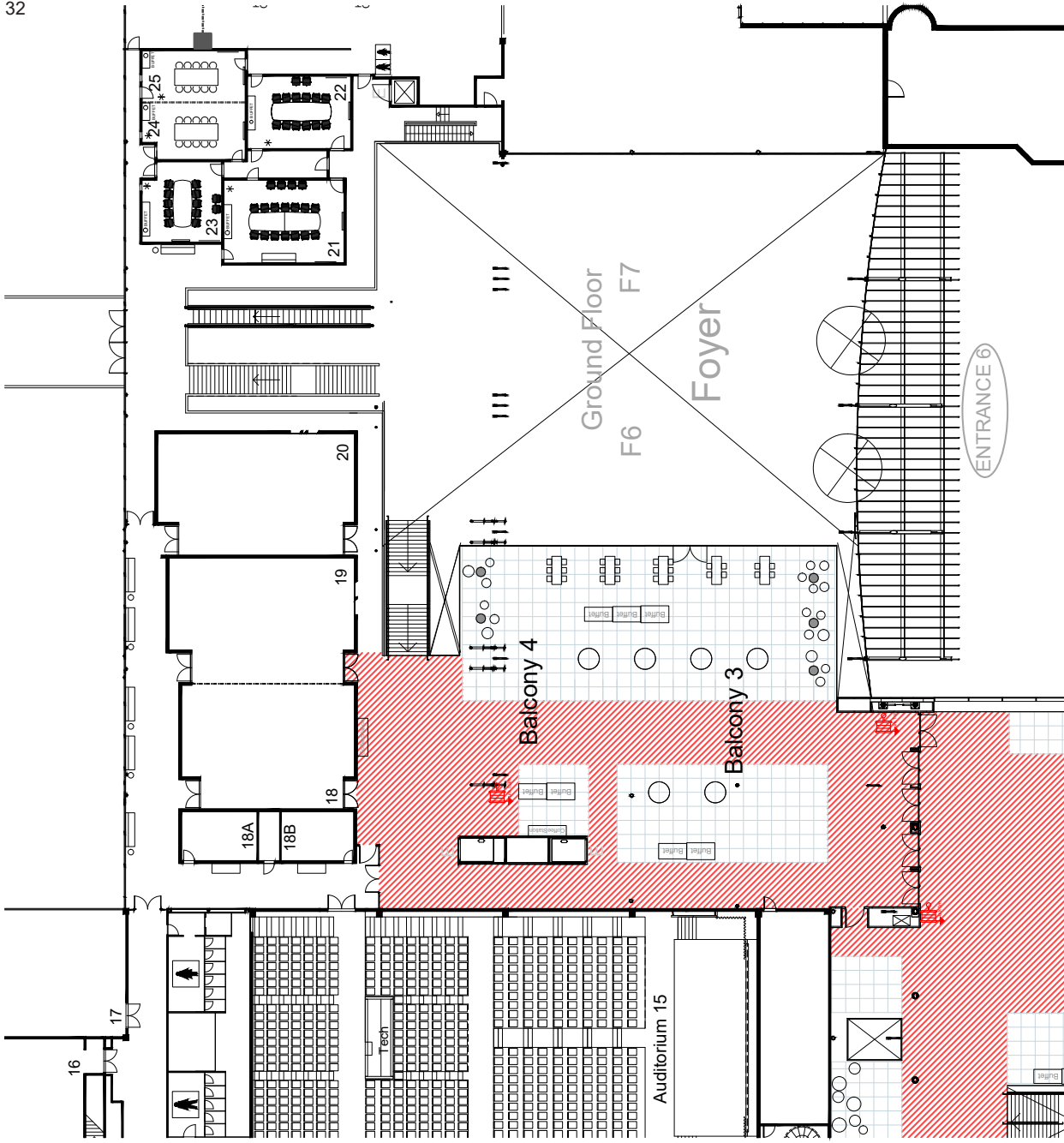
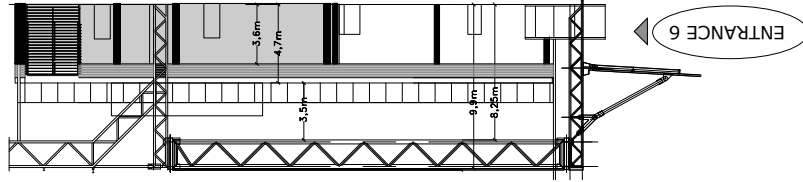


DETAILS Loft/Ceiling

- 1x1m GRID (ground floor)
- SØJLER Pillars
- SPÆR Beam
- SPRINKLING Sprinkling
- KABELKANAL Cable tray
- VENTILATON Ventilation
- OVENLYSVINDUE Skylight
- STRÅLEVARME Radiant heat

1 Sal Balcony 3/4 1st Floor Balcony 3/4

SCALE 1:500 - FORMAT A4



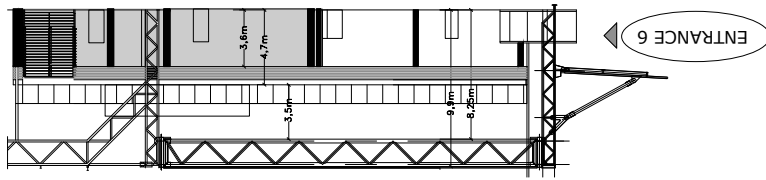
DETAILS Gulv/Floor

- 1x1m GRID
- BRANDTRYK Fire-alarm
- SLANGEVINDER Fire-hose reel

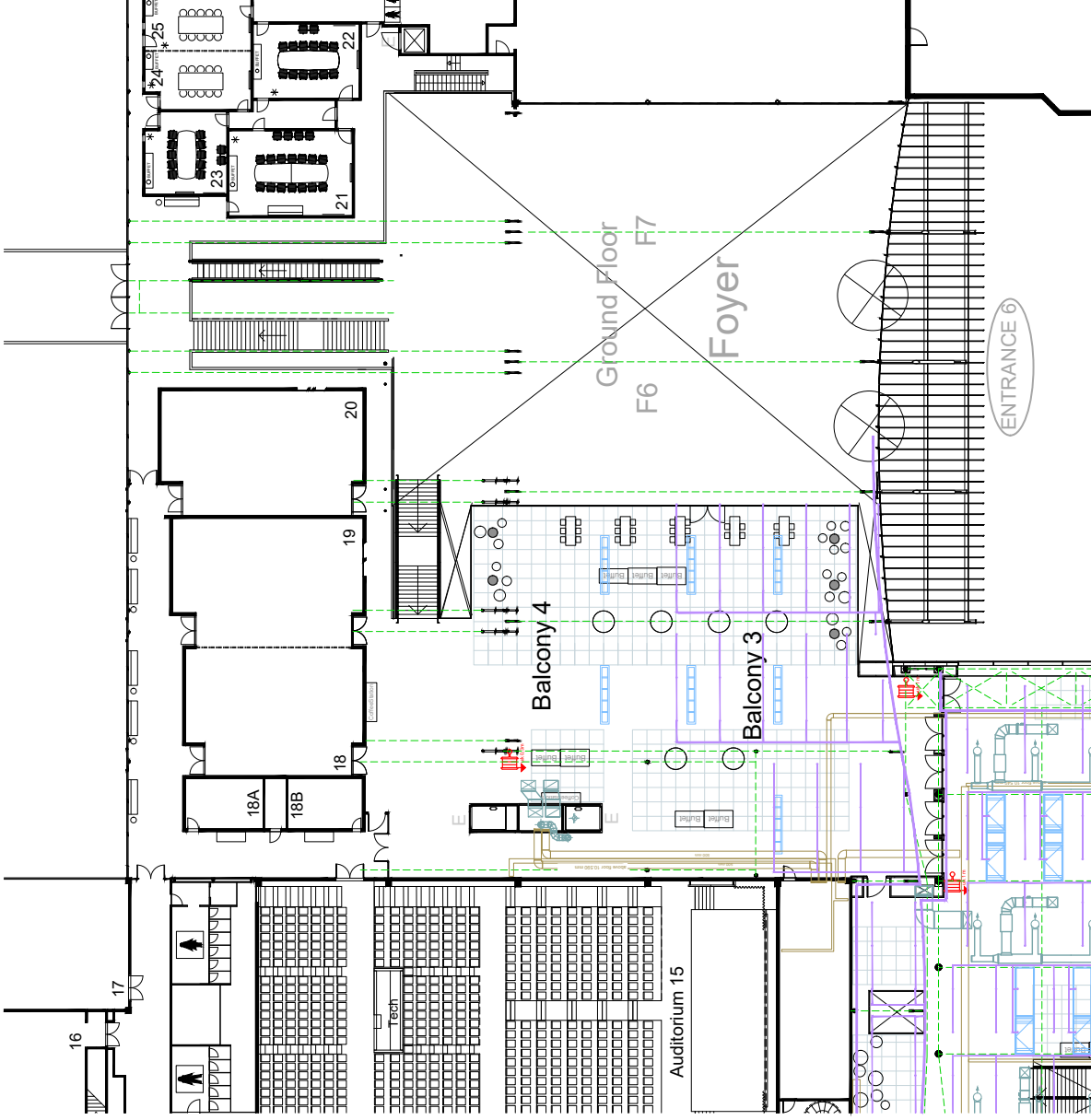
- Brand Restriktions Zone:**
 - Gul- Begrænset indretning
 - Orange- Særlige betingelser og restriktioner
 - Red- Opbygning forbudt
- Fire Restriktions Zone:**
 - Yellow- Limited usage
 - Orange- Special conditions and restrictions
 - Red- All Build up prohibited

1 Sal Balcony 3/4 1st Floor Balcony 3/4

SCALE 1:500 - FORMAT A4



Snitt nord Cross section north



DETAILS Loft/Ceiling

- 1x1m GRID (ground floor)
- SØJLER Pillars
- SPÆR Beam
- SPRINKLING Sprinkling
- KABELKANAL Cable tray
- VENTILATION Ventilation
- OVENLYSVINDUE Skylight
- STRÅLEVARME Radiant heat

Outdoor area Entrance 3-6

Maksimal belastning på udendørs fliser ved Indgang 3-6:

Punktbelastning: 1.000 kg per m², dog skal belastningen minimum fordeles på 20 x 20 cm

Køretøjer: Alm. personbiler og varevogne op til 3500kg.

Maximum load for outdoor tiles by Entrance 3-6:

Point load: 1,000 kg per m², however, the load must be distributed across an area of minimum 20 x 20 cm

Vehicles: Ordinary cars and vans up to 3500kg.

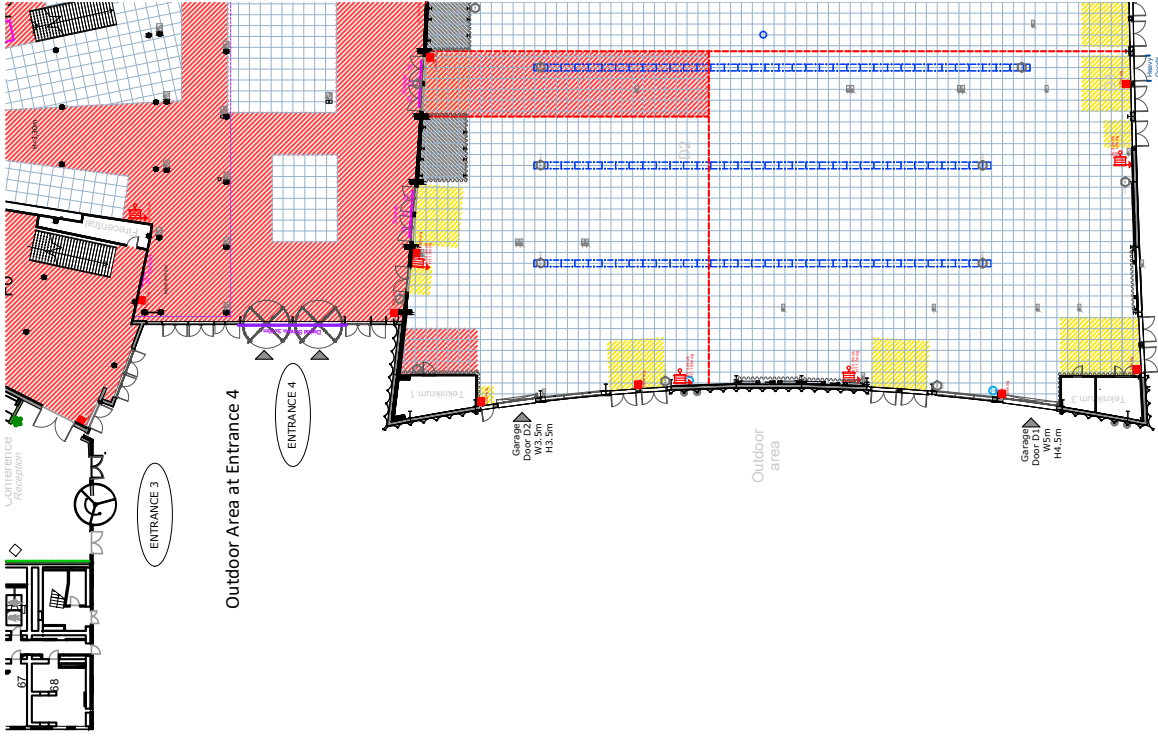
Indgang 3-4 udendørsområde

Entrance 3-4 outdoor area

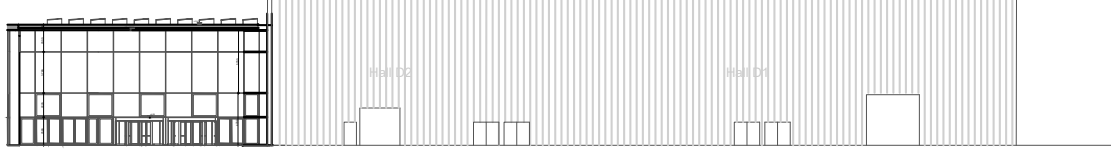
SCALE 1:750 - FORMAT A4



AC Bella Sky



Foyer F1



Facade syd Facade south

DETAILS



LYSMAST
Light mast



FLAGSTANG
Flagpole



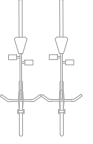
PULLERT
Bollard



BRANDHANE
Fire hydrant



AFFALDSSPAND
Waste bin



CYKEL PARKERING
Bicycle parking

Center Boulevard

Brand Restriktions Zone:

- Gul- Begrænset indretning
- Orange- Særlige betingelser og restriktioner
- Red- Opbygning forbudt

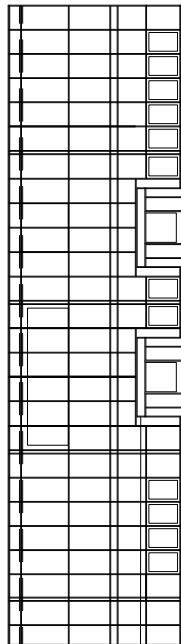
Fire Restriktions Zone:

- Yellow- Limited usage
- Orange- Special conditions and restrictions
- Red- All Build up prohibited

Indgang 5-6 udendørsområde

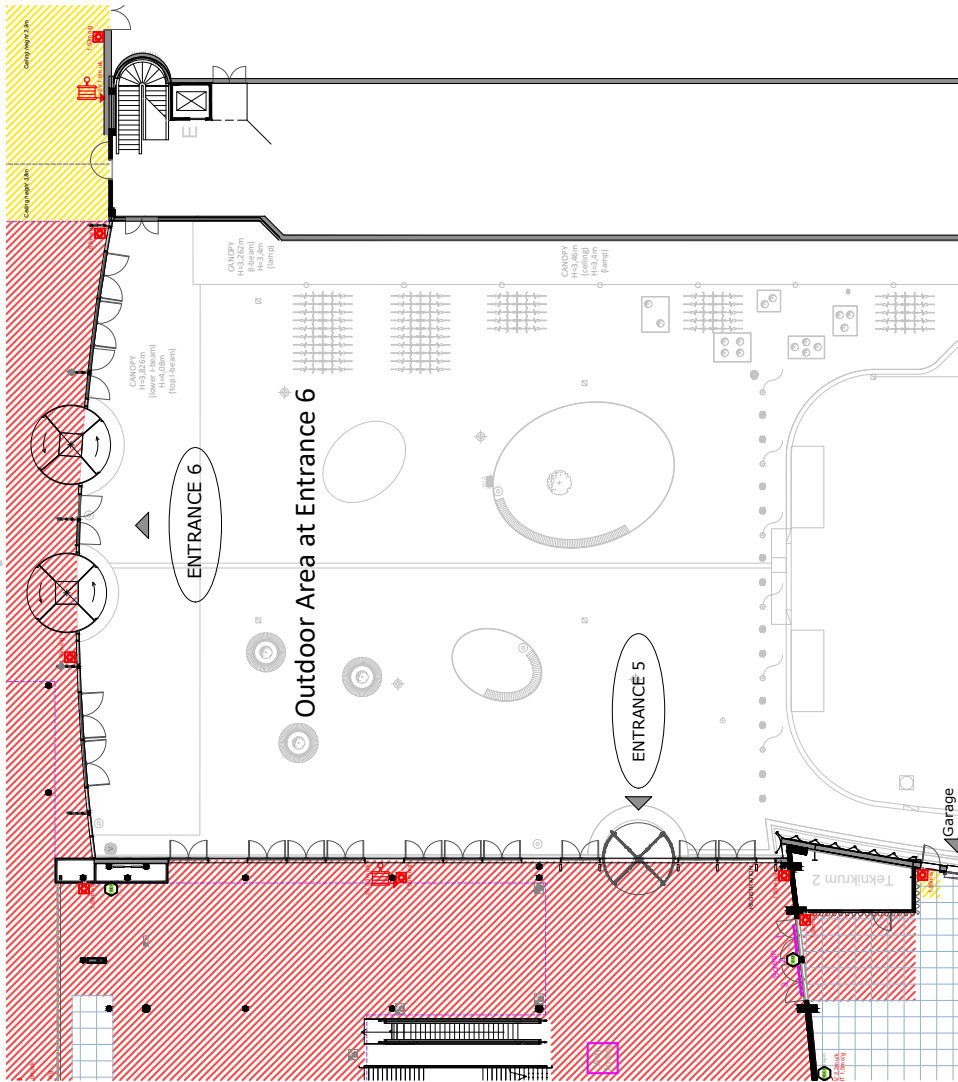
Entrance 5-6 outdoor area

SCALE 1:500 - FORMAT A4



Facade øst Facade east

Foyer F6/7

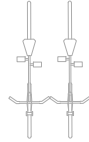


Facade nord Facade north

Foyer F4

Hall C

DETAILS



Center Boulevard



Brand Restriktions Zone:
 -Gul- Limited usage
 -Orange- Special conditions and restrictions
 -Red- All build prohibited

Fire Restriktions Zone:
 -Gul- Begrænset indretning
 -Orange- Særlige betingelser og restriktioner
 -Red- Opbygning forbudt

BELLA CENTER COPENHAGEN

Center Boulevard 5

DK 2300 • CPH S

Tel +45 3252 8811

bc@bellacenter.dk

www.bellacentercopenhagen.dk

**BELLA ·
CENTER**
COPEN
HAGEN